



Pictured - Light Grey Grooved Composite Decking Boards

CLADCO COMPOSITE DECKING AND JOISTS

Installation Guide,
Aftercare and FAQs

CLADCO
PROFILES



CONTENTS

Storage, Colour and Warranty	3
Double Joists, Temperature Expansion and Natural Weathering	4
Tools and Equipment	5
Prepare your Base	6
Recycled Plastic Frame and Laying Decking Boards	7
Composite Frame and Laying Decking Boards	9
Timber Frame and Laying Decking Boards	12
Finishing your Decking	15
Aftercare and Maintenance	16
FAQs	17



STORAGE AND HANDLING

Cladco Composite Decking Boards should always be stored in a cool shaded spot on a flat and level surface which supports the whole length of the Board. It is recommended to store the Boards on a pallet to ensure they are not sat directly on wet or cold ground. Boards should be stored properly until they are ready to acclimate.

Wear protective gloves when handling the Boards and take care when lifting them. We recommend that a minimum of two physically capable persons carry the Boards. Always ensure anyone assisting with installation or handling is physically capable.



BOARD COLOUR VARIATION

Cladco Composite Decking is made with a combination of materials, including wood, making it a natural product that will exhibit colour variations. As a result, the colour will differ between Boards, even when ordered at the same time. You may also notice slight colour differences within a single batch. Orders purchased at different times will display noticeable shade differences.

Products purchased together but then split into two separate projects will stabilise at different rates. For example, if an area is installed and extended sometime later, variations may occur within the Boards, even if they come from the same batch. If Composite Boards are used across multiple projects, the stabilisation process will vary for each set, leading to differences in appearance over time.

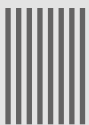
Cladco Composite Decking is designed and manufactured to mimic the natural grain and colour variations found in real timber Decking. To ensure a balanced and visually pleasing result, we recommend laying out all the Boards before installation to evenly distribute the natural variations across your Decking area.



15 YEAR WARRANTY

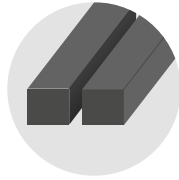
Cladco Composite Decking Boards are supplied with a 15-year warranty, subject to terms and conditions. We advise installing Composite Decking Boards onto Cladco Recycled Plastic Decking Subframes, and in accordance with our Installation Guide, to qualify for the extended 15-year warranty. Cladco Decking Boards should be installed as per this Installation Guide, and failure to do so may invalidate the warranty.

For further information, see www.cladcodecking.co.uk/cladco-profiles-limited-conditions-sale.



COLOUR VARIATION

To ensure a balanced and visually pleasing result, we recommend laying out all the Boards before installation to evenly distribute the natural variations across your installation.



DOUBLE JOISTS AND FIXING CLIPS

Please note that double Joists must be installed at butt joints to provide adequate support for each Board end. Additionally, Fixing Clips must be used at each Board end, and Boards should never share a Fixing Clip.

Adhering to these guidelines will help ensure proper installation and longevity of your Composite Decking. Failure to follow these guidelines will invalidate the product's warranty.



COLOUR STABILISATION

All Cladco Composite products contain UV stabilisers; however, due to their natural elements, all Composite products will undergo an initial colour stabilisation process. This may result in some changes in colour during the first few months after installation as the product acclimatises to its environment.



TEMPERATURE GUIDE

Cladco Composite Decking Boards will naturally expand and contract with changing temperatures. To account for this, it is essential to follow our recommended guidelines when installing Boards, particularly where two Boards meet end-to-end at butt joints.

Spacing guidelines for butt joints:

7mm spacing at temperatures of 5°C and below

6mm spacing at temperatures between 5°C and 15°C

5mm spacing at temperatures of 15°C and above

TOOLS



Protective Equipment

When handling or carrying Decking Boards, it is advised to wear long sleeves and gloves. When cutting the Boards, we suggest you wear a protective dust mask, ear defenders and safety glasses. Knee pads are recommended to be worn when fitting Decking.



Tool Set

Standard everyday carpentry tools will be needed to complete the installation, including a tape measure, pencil, spacing tools and stanley knife.



Power Drill Or Driver

Standard power drills can be used when installing Composite Decking Boards. A standard Phillips screwdriver bit PH2 x 65mm should be used when working with Speeddekz 65mm Woodscrews and Speeddekz 50mm Screws.



CTI Adhesive

We recommend using CTI Adhesive to secure Composite Trims when concealing a support system beneath. When using CTI Adhesive, do not allow the Adhesive to get on the Decking Boards, as this can damage the finish of the Decking.



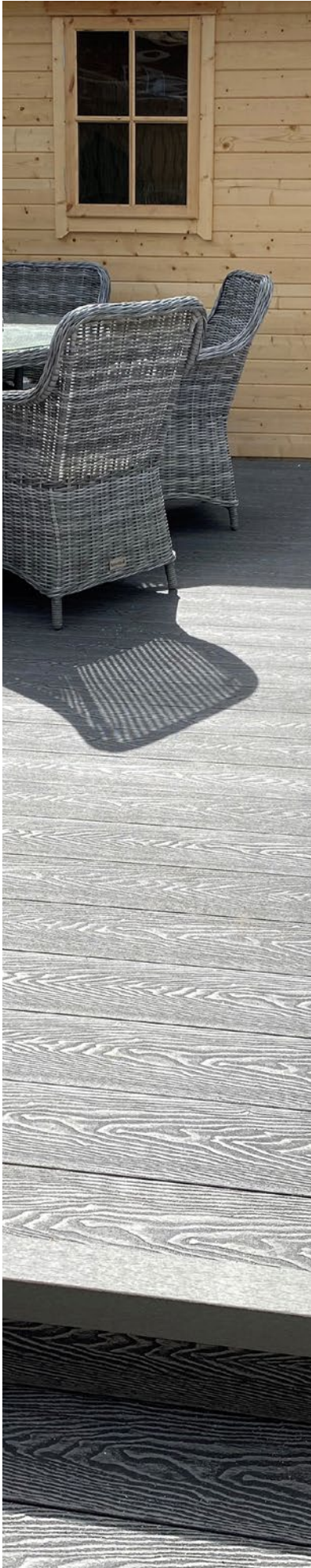
Jigsaw Or Handsaw

Composite Decking Boards can be cut using any standard wood cutting tools. We recommend using a fine-toothed blade to get the cleanest finish to your cut edge.



Spirit Level And String

A spirit level is essential when installing Decking Boards to ensure a level support system. A spirit level ensures the Decking Boards are installed along a straight edge. A slight slope will allow for water run-off.



PREPARE YOUR BASE

CHOOSE FROM TWO BASES



CONCRETE BASE

A 100mm thick concrete base is recommended, with a slight slope for drainage to occur. The optimum slope should be around 5mm for every metre.

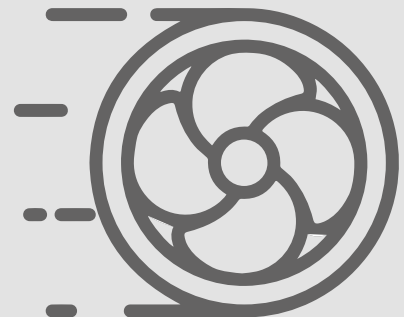


GRASS OR SOIL BASE

Remove the turf or soil until the ground is completely even, ensuring to remove any debris or rocks from the area. Cover the area of your site with a layer of Weed Mat to prevent any weed re-growth coming up under your Decking. If you need to overlap the Weed Mat, ensure you do this with enough fabric to prevent any gaps. Once cut and pinned into place, cover the Weed Mat with your desired coverage, such as chippings, bark or stones, so that none of the Weed Mat material is exposed.

AIRFLOW

Ensure your substructure design allows for significant airflow and ventilation. If the Decking is being installed in areas with poor ventilation, it must be installed on top of a substructure that allows for an airflow gap of 30mm for Composite Joists and 50mm for both Structural Composite Joists and Recycled Plastic Joists.



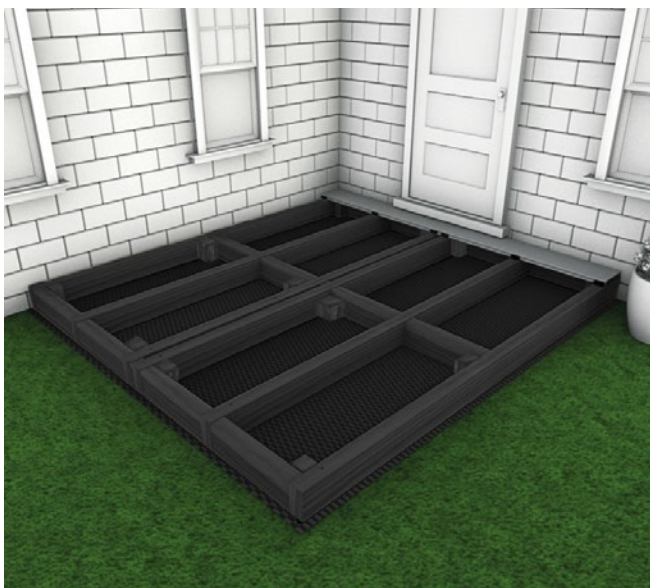
RECYCLED PLASTIC FRAMEWORK



1 Recycled Plastic Joists can be installed directly over grass ensuring that Weed Mat is laid underneath. Alternatively, a raised substructure can be installed using Recycled Plastic Posts. The maximum recommended space between Joist rows depends on the angle at which you intend to lay your boards in relation to the Joists, but should **never exceed 400mm**, please see diagram.

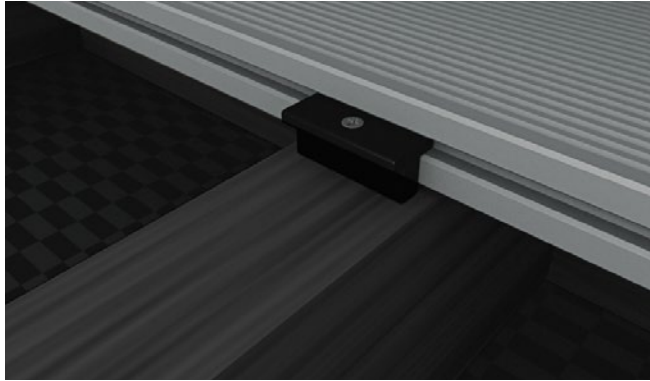


2 Starter Clips need to be fixed to the end of the Joists before laying the first Board. Place these at the end of each Joist, leaving a gap of 15mm between the wall and the Starter Clip to allow for expansion.



3 Our Composite Boards are easily fastened to the Joists of a supporting substructure with the help of our Stainless Steel Clips or T-Clips. Start at the outside of the area to be decked. Place your first Board and fix it to each Joist it crosses using a row of Starter Clips.

LAYING THE DECKING BOARDS



4 Slot Clips into the groove along the side of the Board and screw them into the supporting Joists with the screws provided, using one Clip for each supporting Joist. We recommend you use our Stainless Steel Wood Screws offering increased wear and less corrosion. **Our T-Clips provide a 7mm gap between Boards, while SS-Clips provide a 3mm gap.**



5 Fit your next Board by sliding it onto the Clips used to secure the first Board and fitting another set of Clips to secure the opposite side of the Board, using one Clip for each supporting Joist. Follow a similar process to fix subsequent Boards. The ends of Boards must be fully supported. No overhang or cantilever is advised.



6 At butt joints – where the ends of two Decking Boards meet – you will need to ensure that each Board is held in place with its own Clip where they meet. Please ensure you leave adequate gaps for expansion and contraction of the Boards, in most cases this will need to be at least 7mm. Please view the temperature guide on page 4 for more information.

HAVE YOU THOUGHT ABOUT TRYING A DIAGONAL PATTERN?

Why not transform your space by installing in a diagonal pattern? This pattern is great for walkways or for the more compact Decking areas, as it can elongate the space.

Simply lay the Boards at a 45-degree angle to the Joists, or build the Joists to a 45-degree angle within the frame. When using a diagonal design, the Joists must be **no more than 250mm** apart.



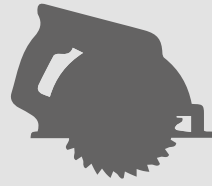
Pictured - Charcoal Woodgrain Effect Composite Decking Boards

LAYING THE DECKING BOARDS



EXTREME TEMPERATURES

Extreme temperature changes could cause the Boards to expand or contract. Ensure Boards have had sufficient time to acclimatise to the temperature before installing. Do not install in extreme temperatures.



CUTTING

If Boards need to be cut to size, ensure the Boards are installed and secured immediately after cutting.



7 Having fastened your Boards, all that remains is to tidy up the sides of your new Decking with our Composite Skirting or Fascia Boards, which can be used to hide the unfinished ends of Boards and supporting Joists.



8 Our Hollow Decking End Caps are used to seal off the ends of Hollow Core Boards to give your Decking a professional finished look. End Caps are available in the same colours as all our Composite Decking Boards. Apply them to neatly complete your Decking project.

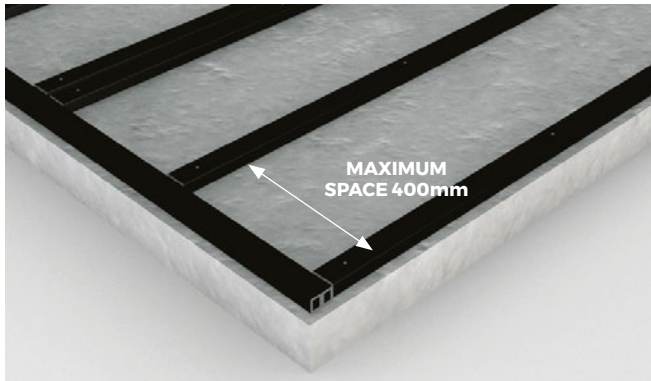
RAISED DECKING AREA

Steps and a raised Decking area can be included into your design using upright Posts to support the raised framework. This will completely transform your Decking space into a dynamic, relaxing outdoor area.

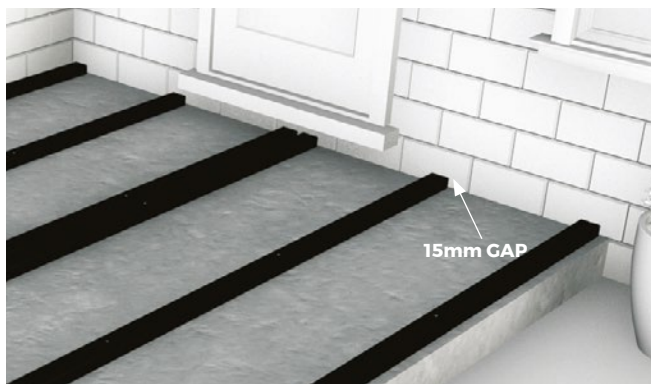


Pictured - Ivory Woodgrain Effect Composite Decking Boards

COMPOSITE FRAMEWORK



1 Boards must not be laid directly on the ground but should be fixed to the Joists. The maximum recommended space between Joist rows depends on the angle at which you intend to lay your Boards in relation to the Joists, but should **never exceed 400mm**, please see diagram. Composite Joists should be screwed into the concrete base.



2 A gap of at least **15mm** should be left between the ends of Joists and a fixed object such as a wall, and **at least 7mm** between the ends of Joists at butt joints. These allow for proper drainage and temperature expansion.



3 A Starter Clip needs to be fixed to the end of the Composite Joists before laying the first Board. Place these at the end of each Joist where you will start to lay your Boards, ensuring there is a 15mm gap between the Decking and the wall to allow for expansion.



4 Our Composite Boards are easily fastened to the Joists of a supporting substructure with the help of our Stainless Steel Screws and Clip System. Start at the outside of the area to be decked. Place your first Board and fix it to each Joist it crosses using a row of Starter Clips.

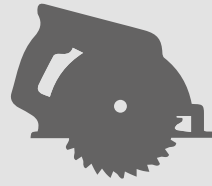
LAYING THE DECKING BOARDS



TEMPERATURE GUIDE

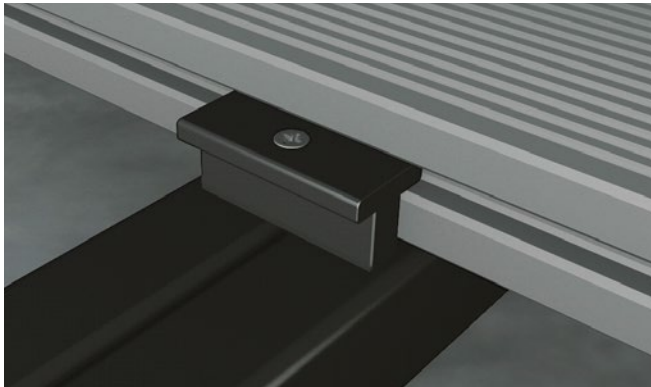
Spacing guidelines for butt joints:

- 7mm spacing at temperatures of 5°C and below
- 6mm spacing at temperatures between 5°C and 15°C
- 5mm spacing at temperatures of 15°C and above

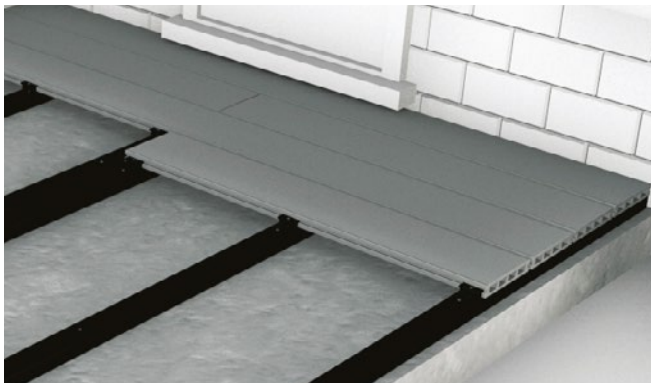


CUTTING

If Boards need to be cut to size, ensure the Boards are installed and secured immediately after cutting.



5 Slot Clips into the groove along the side of the Board and screw them into the supporting Joists with the screws provided, using one Clip for each supporting Joist. We recommend you use our Stainless Steel Wood Screws offering increased wear and less corrosion. **Our T-Clips provide a 7mm gap between Boards, while SS-Clips provide a 3mm gap.**



6 Fit your next Board by sliding it onto the Clips used to secure the first Board and fitting another set of Clips to secure the opposite side of the Board, using one Clip for each supporting Joist. Follow a similar process to fix subsequent Boards. The ends of Boards must be fully supported. No overhang or cantilever is advised.



7 At butt ends, where two Decking Boards meet, ensure each Board is held in place with its own Clip. Allow adequate spacing at both parallel edges and butt joints to allow for expansion and contraction, in most cases this will need to be at least 7mm. When using a Hollow Composite Board, you will need End Caps to seal the ends. Please view the temperature guide on page 4 for more information.

TIMBER FRAMEWORK



1 A Timber substructure must be installed onto a raised frame over grass, with Weed Mat underneath. Timber Posts should be secured at a maximum of one-metre intervals around the edges of the frame. The maximum recommended space between Joist rows depends on the angle at which you intend to lay your Boards in relation to the Joists, but should **never exceed 400mm**, please see diagram.



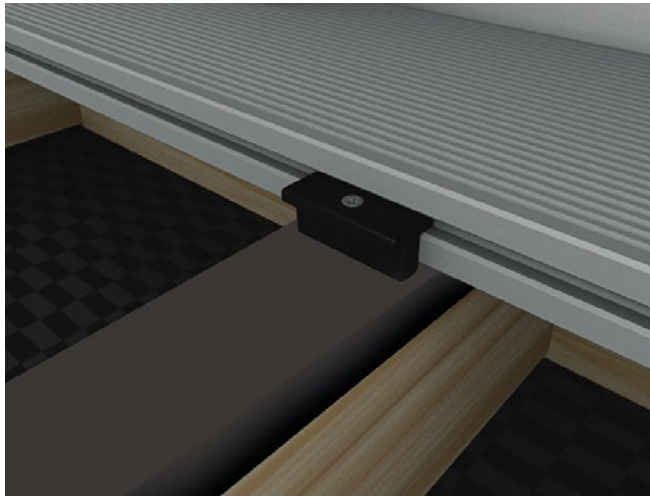
2 Apply Deck Tape to the top surface and cut ends of the Timber Joists to protect them from moisture. Starter Clips need to be fixed to the end of the Joists before laying the first Board. Place these at the end of each Joist, leaving a gap of 15mm between the wall and the Starter Clip to allow for expansion.

JOIST HANGERS - If you are using 50mm Joist Hangers, install using 30mm x 3.75mm Square Twist Nails. 12mm bolt holes are also included in the Hangers for added stability. The hanger depth must be at least 60% of the depth of the supported member to prevent rotation unless additional lateral restraint is applied to the top of the supported member.



3 Our Composite Boards are easily fastened to the Joists of a supporting substructure with the help of our Stainless Steel Screw and Clip System. Start at the outside of the area to be decked. Place your first Board and fix it to each Joist it crosses using a row of Starter Clips.

LAYING THE DECKING BOARDS



4 Slot Clips into the groove along the side of the Board and screw them into the supporting Joists with the screws provided, using one Clip for each supporting Joist. We recommend you use our Stainless Steel Wood Screws offering increased wear and less corrosion. **Our T-Clips provide a 7mm gap between Boards, while SS-Clips provide a 3mm gap.**



5 Fit your next Board by sliding it onto the Clips used to secure the first Board and fitting another set of Clips to secure the opposite side of the Board, using one Clip for each supporting Joist. Follow a similar process to fix subsequent Boards. The ends of Boards must be fully supported. No overhang or cantilever is advised.



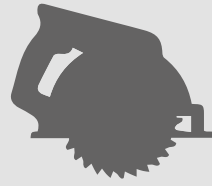
6 At butt joints – where the ends of two Decking Boards meet – you will need to ensure that each Board is held in place with its own Clip where they meet. Please ensure you leave adequate gaps for expansion and contraction of the Boards, in most cases this will need to be at least 7mm. Refer to the temperature guide on page 4 for more information.

LAYING THE DECKING BOARDS



EXTREME TEMPERATURES

Extreme temperature changes could cause the Boards to expand or contract. Ensure Boards have had sufficient time to acclimatise to the temperature before installing. Do not install in extreme temperatures. Refer to page 4 for more information.

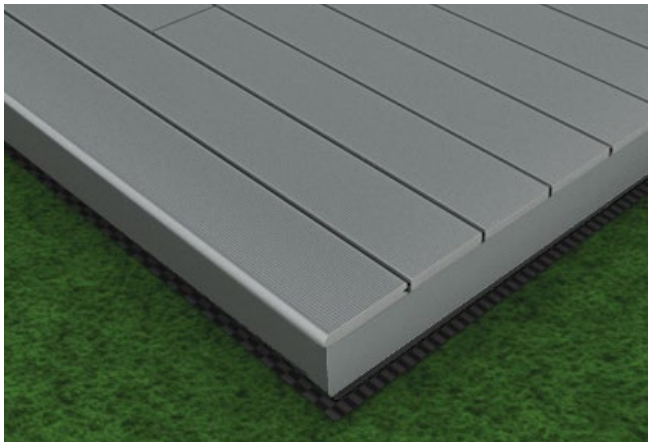


CUTTING

If Boards need to be cut to size, ensure the Boards are installed and secured immediately after cutting.



7 Having fastened your Boards, all that remains is to tidy up the sides of your new Decking with our Composite Skirting or Fascia Boards, which can be used to hide the unfinished ends of Boards and supporting Joists.



8 Our Hollow Decking End Caps are used to seal off the ends of Hollow Core Boards to give your Decking a professional finished look. End Caps are available in the same colours as all our Composite Decking Boards. Apply them to neatly complete your Decking project.

BULLNOSE FRAMING

Composite Bullnose Boards are intended for use as borders around your Composite Decking area. Due to natural batch variations and the timber within the Boards, they are not designed to blend seamlessly with the rest of your Composite Decking. For an enhanced aesthetic, we recommend choosing a contrasting colour to create a picture frame effect.

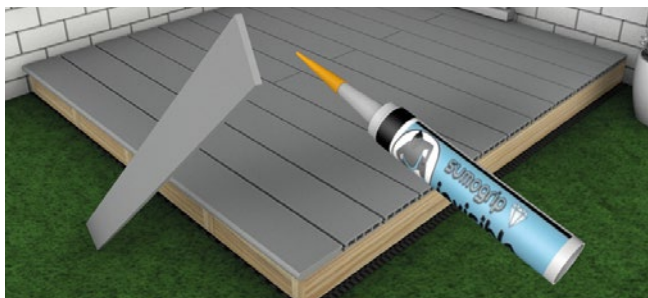


Pictured - Teak Woodgrain Effect Composite Decking with Ivory Bullnose Boards

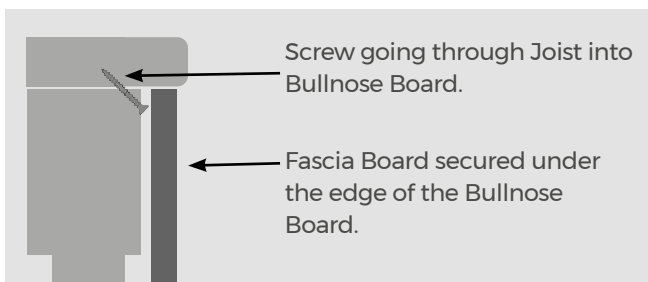
FINISHING YOUR DECKING

CHOOSING THE RIGHT TRIMS

Made with the same Composite material and colours as our Decking Boards, Cladco Bullnose Boards, Fascia Boards, Skirting Trims and Corner Trims can all be used to finish your project to a high-end standard. Fascia Boards can be fitted to the exposed Joists, hiding the base below and the underside of the Decking. Corner Trims can be installed over corners to create a neat finish, and Bullnose Boards can round off the outside edge of a Decking area.



EXPANSION GAP - When installing Composite Skirting Trims, Corner Trims, Fascia Boards and Bullnose Boards, please allow an adequate expansion gap of **up to 8mm** to account for natural movement.



HOW TO INSTALL BULLNOSE BOARDS

Using Speeddekz 65mm Wood Screws, insert at an angle through the supporting Joist underneath the Board. Ensure the Bullnose Board is supported along the length with Joists and a Screw inserted into each one. Two Screws are recommended across the width of the Board at regular intervals, inserted 13mm from the edges of the Board. After securing the front of the Board, secure the centre into the Joist below, followed by the end of the Board. We recommend using 11 Screws per 4m Board, with T-Clips or Stainless Steel Clips secured in the grooved edge of the Composite Bullnose Board.

HOW TO INSTALL FASCIA BOARDS, SKIRTING OR CORNER TRIMS

Using 50mm SPEEDDEKZ Decking Screws, fix the ends of Fascia Boards or Corner Trims to the Joists or Boards behind. Ensure the Screws are inserted 13mm from the edge of the Fascia Board or Trim. Continue fixing 300mm after each Screw. Alternatively, you can use a strong adhesive (CTI) to secure the Boards or Trims. For optimum results, alternate between Screws and adhesive every 150mm until the Board or Trim is fastened securely.



CTI ADHESIVE

When using CTI Adhesive, do not allow the Adhesive to get on the Decking Boards, as this can damage the finish of your Decking.

END CAPS

End Caps are used to seal the ends of Hollow Composite Decking Boards. They may require sanding due to being a tight fit. Ensure the End Caps are not forced into place as this may cause them to snap.



AFTERCARE AND MAINTENANCE

It is important to keep your Composite Decking clean and free from debris and dirt to ensure a long-lasting Decking area.

To keep your Composite Decking well maintained, we advise avoiding:

- Dragging furniture or plant pots across the Decking.
- Dropping heavy items onto the Decking (such as large plant pots, trees, BBQs and furniture etc).
- Using items with metal feet without a suitable padding material between the feet and the Decking to avoid scratching or damaging the Decking.
- Using corrosive or strong chemical treatments, such as bleach, or allowing contact with substances like suntan lotion or insect repellent, may cause discoloration. Please note that Cladco Decking Cleaner contains a small percentage of bleach and should be used with caution, as prolonged or excessive exposure may affect the colour or woodgrain finish.

As a Composite material, Cladco Composite Decking Boards will naturally accumulate dirt when exposed to outdoor conditions. For everyday debris such as plants, leaves, berries, or animal droppings, simply brush your Decking with a broom and warm, soapy water.



1 Use a broom to remove any debris, such as leaves, from the Decking to create a clear surface ready for cleaning.



2 Prepare a bucket of hot soapy water or grab a bottle of Cladco Ultimate Composite Decking Cleaner.



3 Apply the hot soapy water or Cleaner to your Decking. Once applied use a broom to scrub the surface of the Decking. Any surface debris will start to lift off.



4 Leave the hot soapy water or Cleaner on the surface for 60 minutes before rinsing. Ensure all Cleaner, soap and debris have been successfully removed from the Boards before leaving to dry.

FIRE AND HEAT SOURCES

Precautions should be taken when using fire pits and BBQs on Composite Decking. We advise a protective surface is laid between the fire pit or BBQ and the Decking. You should ensure the fire pit or BBQ is secure and does not wobble or move. Caution should be taken with embers coming into contact with the Decking. Cladco cannot be held responsible for any fire damage or flames that come into contact with the Decking. To use a heat source near the Decking is entirely at the risk of the customer.

MOULD AND MILDEW

Mould and mildew are common in outdoor environments. The climate will affect how mould grows, dependent on temperature and moisture levels. To minimise mould growth on your Decking, ensure mould is removed often. If mould is present, use soapy, hot water or Ultimate Composite Decking Cleaner to remove. In cases of more stubborn dirt or grime, pressure washing may be necessary to restore the Decking's appearance.

SNOW AND ICE

Take care when walking on your Decking in extreme weather conditions, such as snow or ice, as it may become slippery.

If using de-icer, ensure it contains calcium chloride, which will not damage your Decking. It may leave a slight residue but this can be easily cleaned away. Always test chemicals on an inconspicuous area of your Decking.

Avoid grit or sand, as well as metal or plastic spades, on your Decking as they may scratch the surface.

FREQUENTLY ASKED QUESTIONS

Where can I install Composite Decking?

Cladco Composite Decking is very practical for any outdoor space (subject to building control and a structural framework). Cladco Composite Decking can be installed on grass, soil or concrete, provided a suitable frame has been created below.

Can I use a pressure washer?

A pressure washer can be used to clean your Composite Decking area. We recommend using a pressure washer with a psi of no greater than 2,000. A fan tip should be used with a 40-60 degree spread, keeping the head 250-300mm away from the surface. Please note that using pressure washers may increase the chance of screw holes becoming more visible. Always test over an inconspicuous area first. Direct, prolonged pressure washing could damage the surface of the Boards and should be avoided.

Will my Decking get hot in the sun?

As with all Composite products exposed to the sun, they can become hot over prolonged periods. Darker colours can feel hotter in areas exposed to direct sunlight, and so footwear may be necessary in these circumstances. Special caution should be taken when using Decking in areas with prolonged sun exposure and next to glass.

Can I use a fire or patio heater on my Decking?

When using a fire pit or patio heater, it is always recommended to test this with an offcut of a Board first. Any embers or heat that come into contact with the Boards should be removed immediately. Embers or heat may damage the integrity of the Board and cause marks to the surface.

Can I use a standard Board as an edging piece?

Yes, but only where the edge is only aesthetic, such as a balcony edge, if this is your preferred finishing option. However, where the edge is likely to sustain impact, such as a step, we do not recommend using a standard Board. Bullnose edging Boards have been specifically designed with high impact in mind and as such have a thicker surface to withstand the knocks

and scrapes associated with step edges and other applications.

How much does Composite Decking weigh?

A single 4m Solid Composite Decking Board weighs approximately 20.92kg, and Hollow Boards weigh approximately 11.2kg. A single 2.4m Solid Composite Decking Board weighs approximately 12.55kg, and Hollow Boards weigh approximately 6.72kg.

What colours are available?

Unlike traditional timber Decking, Composite Decking Boards are available in a range of colours of original or woodgrain, designed to match or contrast existing buildings and architecture.



Do Composite Boards display variations in shade?

Our Composite Boards are designed to replicate the natural appearance of timber while eliminating the need for regular maintenance. The pigments used in the manufacturing process may react differently with the timber content in each Board, resulting in variations in shade. This is also the case with our Decking Trims, as they are made with the same composition.

Does Composite Decking appear darker under my furniture?

Composite Decking requires time to acclimatise to outdoor environments. During the stabilisation period of around six months, sections of your Decking that are not exposed to weathering, such as areas under furniture, will not weather at the same rate as the rest of your Decking. If you expose these areas to the natural elements, they will gradually even out in colour as the previous Boards have.

FREQUENTLY ASKED QUESTIONS

How hot can Composite Decking get?

As with most outdoor garden products, Composite Decking can become warm if exposed to direct sunlight, especially in the darker colour ranges.

Is Composite Decking maintenance-free?

While Composite Decking requires significantly less upkeep than traditional timber Decking, it is not entirely maintenance-free. Cleaning is necessary to remove debris and prevent potential staining. If your Decking is situated beneath overhanging trees, keep an eye out for leaves, petals, and sap that need to be cleared promptly to avoid marking the surface.

Will watermarks appear on Composite Decking?

Watermarks are a common occurrence during the weathering process of Composite products. As the tannins in the timber content of the Boards come out, watermarks may appear. This is a temporary condition, and the marks will fade naturally as the Decking stabilises over time.

Can Composite Decking Boards get scratched?

Composite Decking Boards are susceptible to scratching, particularly if furniture is dragged across the surface. To minimise the risk of damage, we recommend attaching felt pads to the legs of furniture.

Will plant pots leave stains on Composite Decking?

Due to the porous nature of Composite Decking, prolonged contact with plant pots may cause staining. We recommend placing a mat underneath any pots to prevent this. This precaution should also be taken for other garden furniture.

Does the Decking colour affect maintenance requirements?

If you choose to go for one of our lighter colours, such as Ivory, your Decking is more likely to show dirt. To avoid this, you may need to clean your Decking more often than if you were to choose a darker colour.

Do I need to make sure there is a gap between my Decking Boards?

Cladco Composite Decking Boards will naturally expand and contract with changing temperatures. To account for this, it is essential to follow our recommended guidelines when installing Boards, particularly where two Boards meet end-to-end at butt joints.

Spacing guidelines for butt joints:

- 7mm spacing at temperatures of 5°C and below.
- 6mm spacing at temperatures between 5°C and 15°C.
- 5mm spacing at temperatures of 15°C and above.

Please note that double Joists must be installed at butt joints to provide adequate support for each Board end. Additionally, Fixing Clips must be used at each Board end, and Boards should never share a Fixing Clip.

Adhering to these guidelines will help ensure proper installation and longevity of your Composite Decking. Failure to follow these guidelines will invalidate the product's warranty.

Are Cladco Composite Decking Boards reversible?

Yes, Cladco Composite Decking Boards have two sides; one side with narrow grooves and the other with a woodgrain effect. For low-slip properties, install with the narrow grooves facing up. Please see our Installation Guide for more information.

How to install a Bullnose Decking Board?

For a sophisticated and professional finish, Cladco Composite Bullnose boards are easy to install, see our guide here. Please note that Bullnose Boards are intended for use as borders around your Composite Decking area. Due to natural batch variations and the timber within the Boards, they are not designed to blend seamlessly with the rest of your Composite Decking. For an enhanced aesthetic, we recommend choosing a contrasting colour to create a picture frame effect.

How do you install Cladco Composite Decking?

Cladco Composite Decking is simple to install. Please see our easy-to-follow installation guide here depending on your choice of joists and ground type.

FREQUENTLY ASKED QUESTIONS

Which are the best screws to use to install Composite Decking?

For Composite Decking Boards, we offer a T-Clip system to allow for expansion and contraction of the Boards and Starter Clips for the beginning of installations. For Nordeck Decking installations, we provide Speeddekz Screws and Hidden Decking Fasteners, which can be installed directly into the Board itself. For more information on installation, please visit our installation section.

Why is it necessary to leave expansion gaps between Composite Decking Boards?

Our Composite Boards consist of 60% recycled timber. Due to the natural properties of timber, the Boards expand and contract with temperature changes. Leaving appropriate expansion gaps between Boards allows for this movement, reducing the risk of warping or splitting caused by restricted space. Adequate Board spacing also facilitates cross ventilation, ensuring the longevity and stability of your Decking.

Why is it important to double Joist and use two Clips at adjoining Boards?

When our Composite Decking Boards expand and contract, they must be securely fastened to minimise movement. A single Joist may not provide sufficient surface area for the ends of two Boards to be properly anchored. Using double Joists at adjoining points ensures each Board end is attached to a joist, increasing the stability of your project. Adjoining Boards should never share the same Clip, and should be secured using two clips per Board end.

This method will improve the structural integrity of your Decking; especially in high-stress areas like the ends, where foot traffic, weathering and material contraction or expansion increase the strain on your Decking.

Adhering to these guidelines will help ensure proper installation and longevity of your Composite Decking. Failure to follow these guidelines will invalidate the product's warranty.

How should I install Trims on Decking?

We recommend using CTI Adhesive to attach Composite Trims to your Decking. It is advisable not to install Composite Trims in hot temperatures. To ensure a secure finish, Trims

should be clamped in place for up to 24 hours during installation.

How are End Caps attached to Hollow Composite Decking?

To install our Decking End Caps, you will need to lightly sand the edges of both the Board and the End Cap to create sufficient friction for a secure fit.

Do Composite Boards display variations in shade?

Our Composite Boards are designed to replicate the natural appearance of timber while eliminating the need for regular maintenance. The pigments used in the manufacturing process may react differently with the timber content in each Board, resulting in variations in shade. This is also the case with our Decking Trims, as they are made with the same composition.

Why is mould appearing on my Decking?

Mould or mildew may develop over time due to airborne spores in outdoor environments. Use a suitable Decking cleaner for effective management. Ensure adequate drainage, airflow, and spacing during installation to help prevent mould. Regular maintenance will keep your Decking in optimal condition.

Do Composite Boards display variations in shade?

Our Composite Boards are designed to replicate the natural appearance of timber while eliminating the need for regular maintenance. The pigments used in the manufacturing process may react differently with the timber content in each board, resulting in variations in shade. This is particularly noticeable between the 2.4m and 4m boards. The same applies to our Decking Trims, as they are made using the same composition.



Head Office

Beardown Road
Exeter Road Industrial Estate
Okehampton
Devon
EX20 1UA

01837 659901

info@cladco.co.uk

www.cladcodecking.co.uk

CLADCO
PROFILES

Pictured - Stone Grey Grooved Composite Decking Boards