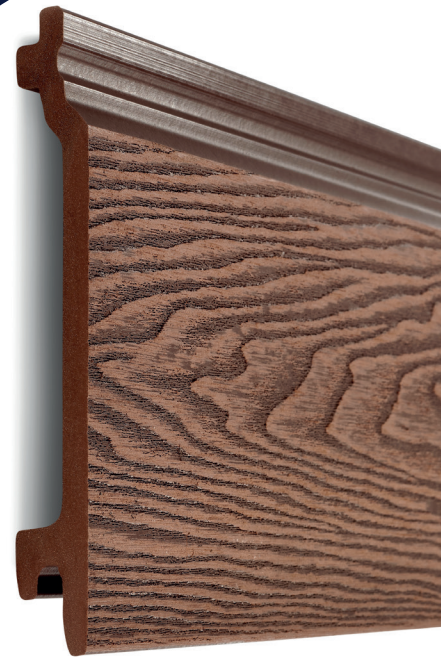


WOODGRAIN EFFECT

Composite Wall Cladding 3.6m



Available in a range of eight colours, Cladco Woodgrain Effect Composite Wall Cladding is the perfect way to make a statement and is a colour-stable alternative to traditional timber exterior cladding. Created with a combination of recycled wood and plastic, Cladco Wall Cladding is a low-maintenance product and will give many years' worth of reliability in all types of weather conditions.

Cladco Composite Wall Cladding Boards give 135mm coverage once you have installed it to your exterior wall. It is recommended that every 500mm is supported by Battens and to use Composite Battens as per the installation guide.

Why Use Our 3.6m Composite Woodgrain Wall Cladding

Cladco Woodgrain Wall Cladding is an easy way to get that real wood effect without the effort, thanks to its attractive woodgrain pattern it gives the appearance of natural wood. Woodgrain Wall Cladding is low-maintenance and doesn't need to be painted, stained, treated or sealed. Simply install the product on any external wall and see the transformation take place.

Cladco Woodgrain Wall Cladding is not just aesthetically pleasing, it can also help protect the exterior walls from the elements and provide a long-lasting covering.



10 Year Guarantee



Easy To Clean And Maintain



Install Vertically Or Horizontally



Made With 100% Recycled Material



Rot And Insect Resistant

SPECIFICATIONS	
Board Length	3.6m
Board Width	157mm
Board Thickness	20mm
Board Weight (Approximate)	6.95kg

COLOURS



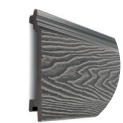
Teak



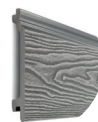
Coffee



Charcoal



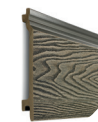
Stone Grey



Light Grey



Ivory



Olive Green



Redwood



PLEASE NOTE - Images are used for illustration purposes only, actual item may vary slightly from the image supplied.



01837 659901 info@cladco.co.uk
www.cladcodecking.co.uk

Beardown Road, Exeter Road Industrial Estate, Okehampton EX20 1UA

