

## COMPOSITE FENCING

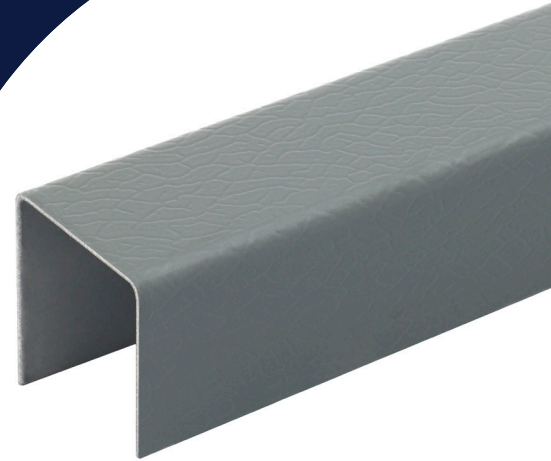
### FENCING RAIL 2m

Cladco Fencing Rail is manufactured from Galvanised Steel, making the 2-metre long Rails rust-resistant and hard-wearing. Rails enable you to cap off the top edges of Cladco Composite Fencing Panels to create a neat, stylish finish.

Alternatively, Fencing Rails can be used along the base of your Composite Fencing Panels for a protective barrier from the ground upwards.

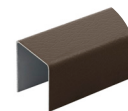
If you are looking to complete your existing Cladco Composite Fencing, please see closest colour match below:

- Charcoal – Black PVC
- Light/Stone Grey – Merlin Grey PVC
- Olive Green – Olive Green PVC
- Coffee/Teak – Vandyke Brown PVC
- Ivory – White PVC
- Redwood – Copper Brown Mica
- Galvanised as an alternative option

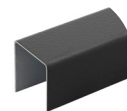


SPECIFICATIONS	
Length	2m
Thickness	0.6mm-0.7mm
Measurements	20mm x 20mm x 18mm

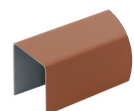
#### COLOURS



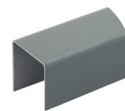
Vandyke Brown PVC



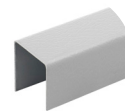
Black PVC



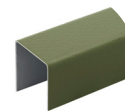
Copper Brown Mica



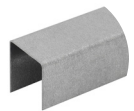
Merlin Grey PVC



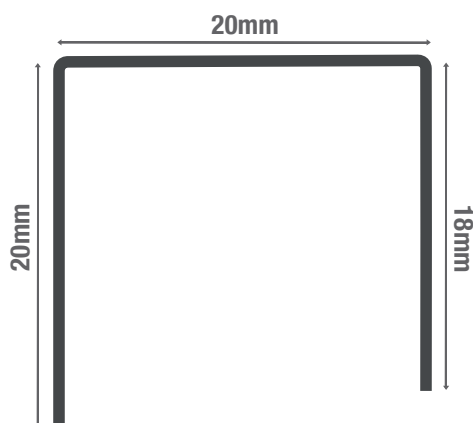
White PVC



Olive Green PVC



Galvanised



**PLEASE NOTE** – Images are used for illustration purposes only, actual item may vary slightly from the image shown.



01837 659901 [info@cladco.co.uk](mailto:info@cladco.co.uk)  
[www.cladcodecking.co.uk](http://www.cladcodecking.co.uk)

Beardown Road, Exeter Road Industrial Estate, Okehampton EX20 1UA

