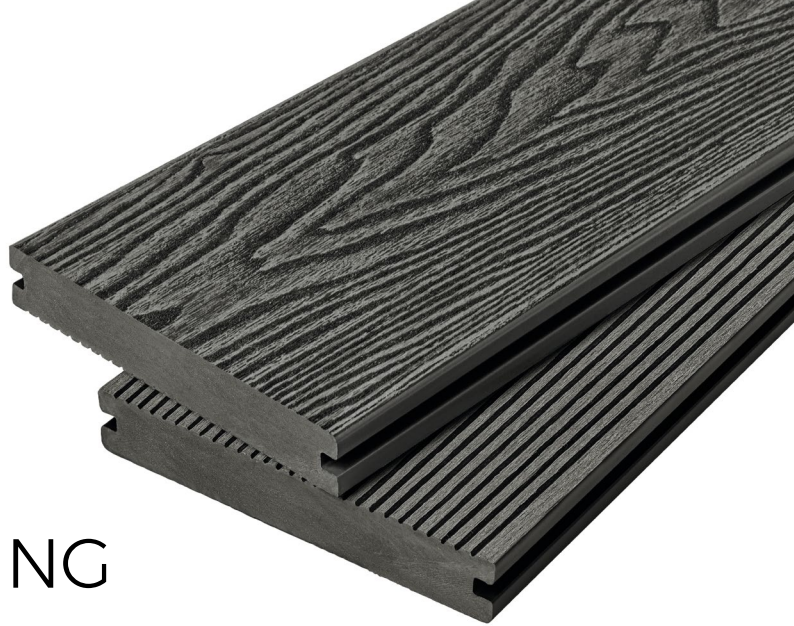
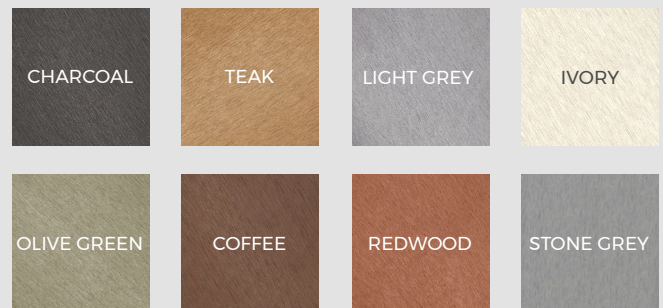


# SOLID REVERSIBLE COMPOSITE DECKING



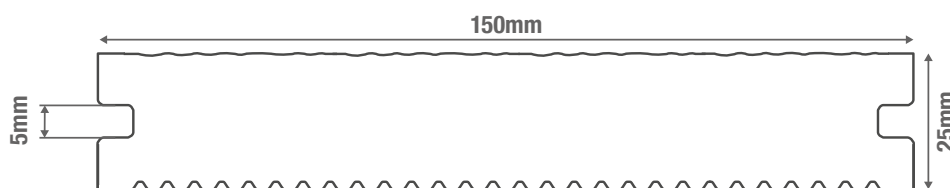
Cladco Solid Reversible Composite Decking provides greater sound absorption for busier decking spaces. Our commercial-grade Reversible Boards are available in 4m lengths and eight subtle colours, for a long-lasting outdoor solution. Composite Decking benefits from being low-maintenance, splinter and rot resistant.

## COLOUR RANGE



BOARD SPECIFICATIONS	
Length	4m
Width	150mm
Thickness	25mm
Coverage	0.6m <sup>2</sup>
Weight	20.92kg

TEST CERTIFICATIONS	
FSC® Certification	SA-COC-005542
Fire Rating	CFL - s1 (EN 13501-1:2018)
Slip Resistance	<b>DRY</b> - Low-slip potential (Narrow Groove side) <b>WET</b> - Moderate slip potential (Narrow Groove side)





Woodgrain effect



Manufactured from 100% recycled materials



Solid construction for increased strength



Install using T-Clips or hidden Clip System



Narrow grooves provide a low-slip surface



#### MATERIALS

Composite wood-plastic mix comprising 60% hardwood fibres, 40% recycled plastics.



#### SURFACES

Choice of either a Woodgrain Effect or Narrow Grooves for your outdoor space.



#### ACCESSORIES

Complete your Cladco Decking® area with Composite Bullnose Boards and Trims.



#### LOW MAINTENANCE

Unlike timber, Cladco Composite Decking Boards do not need to be sealed, stained or varnished.



#### GARANTEE

Cladco Composite Decking is supplied with a 15-Year Guarantee.

## RECYCLED MATERIALS

Cladco Composite Decking is manufactured using 100% recycled materials, reducing our impact on the environment. A mix of 60% recycled hardwood fibres and 40% recycled, post-consumer plastics provides each Board with low-maintenance and long-lasting benefits.

Additional anti-UV agents, colour tints, bonding agents and additives are used to bind the materials to create a durable and fade resistant Composite Decking Board.

All Cladco Composite products are available as FSC® certified for the same cost. If you require FSC® certified products, please ask for these when placing your order.

## AFTERCARE

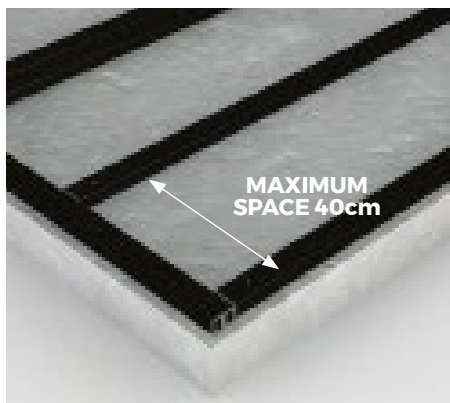
For standard everyday debris such as plants, leaves, berries and animal droppings, simply clear these away with a broom.

Avoid using grit or sand, as well as metal or plastic spades, on your Decking as they may scratch the surface.

## INSTALLATION ADVICE

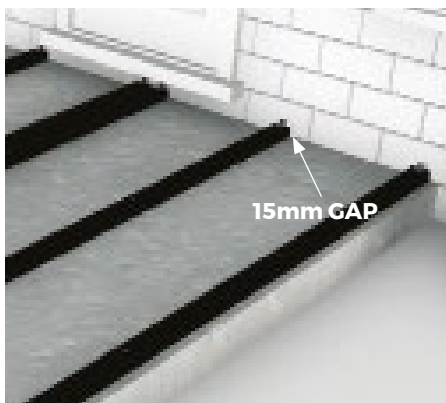
### Joist Spacing

Cladco Composite Decking Joists can be worked with normal woodworking tools and are easily fastened to a suitable supporting Joist substructure, installed with a maximum Joist spacing of 40cm.



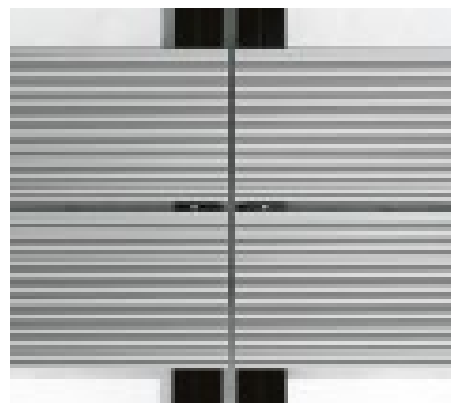
### Starter Clips

Starter Clips need to be fixed to the end of the Composite Joists before laying the first Board. Leave a gap of 15mm between walls and Joists to allow for expansion.



### Board Spacing

Cladco Composite Decking T-Clips ensure Boards are easy to install with a suitable gap. Alternatively, use Cladco Stainless Steel Hidden Clips for a minimal 2-3mm gap between Composite Boards.



## NATURAL WEATHERING

Cladco Composite Decking Boards are manufactured with the addition of an anti-UV agent to enhance durability and reduce the impact of sunlight exposure. However, due to the organic composition of these products, being predominantly timber-based, some natural weathering will still occur.

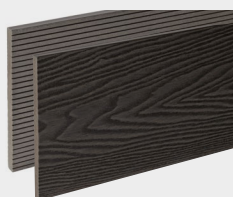
The extent and timeframe of weathering can vary based on the location and the exposure to sunlight that Composite Boards receive. This is a normal process and part of the natural character of the material.

For detailed information about installation, please read our Composite Decking Installation Guide.

## PRODUCT ACCESSORIES



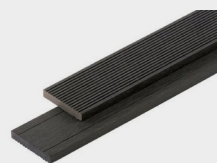
**BULLNOSE BOARDS**



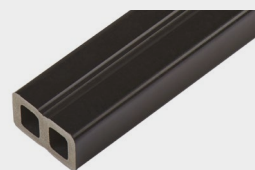
**FASCIA BOARDS**



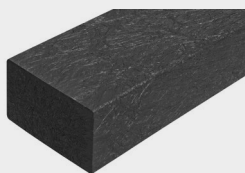
**CORNER TRIMS**



**SKIRTING TRIMS**



**COMPOSITE JOISTS**



**RECYCLED  
PLASTIC JOISTS**



**STAINLESS STEEL  
CLIPS AND SCREWS**  
11 required per 4m Board



**T-CLIP FIXINGS  
AND SCREWS**  
11 required per 4m Board



**STAINLESS STEEL  
STARTER CLIPS**



**65MM HIDDEN  
FASTENING SCREWS**