

## JOISTS

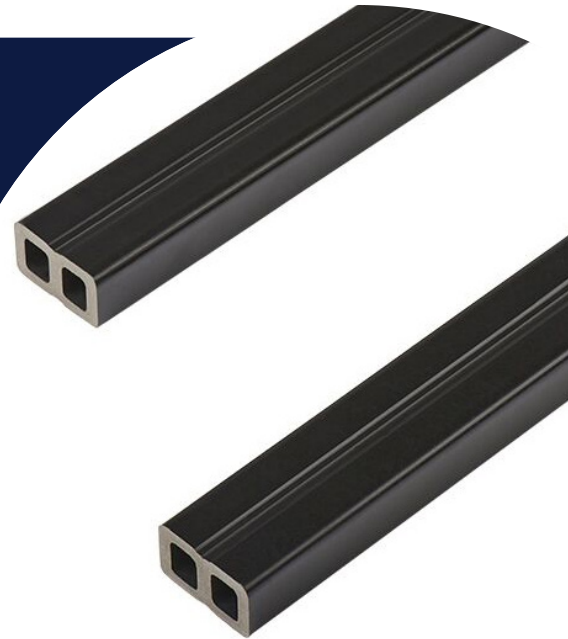
### Composite 4m

Composite joists can be utilised for most domestic decking and wall cladding projects. Cladco recommend using these composite joists in conjunction with a hard concrete base. This is to ensure that the joist support substructure is sturdy and, above all, reliable to use for the rest of your project. Purchasing 1x joist per square metre of decking and spacing them no more than 400mm apart is highly recommended.

#### Details About Our 4m Composite Decking Joists

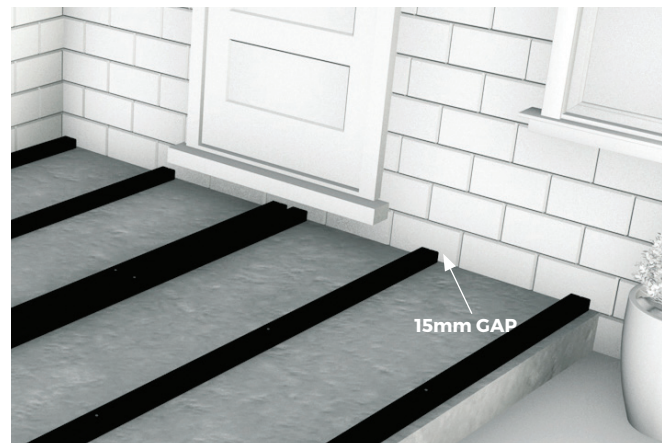
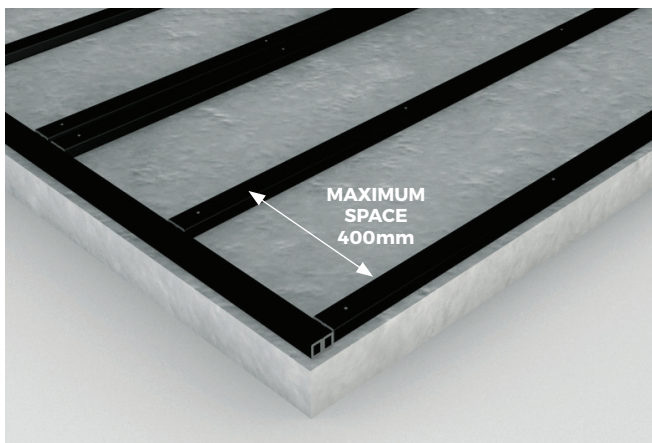
As the first section to be considered before putting together your decking or cladding support, composite joists are a vital component. Composite joists can be used in conjunction with Cladco wall cladding boards, on a solid exterior wall.

Alternatively these joists can be used on a solid concrete base for Cladco composite decking to be installed on top. Each composite joists come in one colour option of charcoal.



SPECIFICATIONS	
Each joist measures	4000mm x 50mm x 30mm
Each joist weighs approximately	4.7kg
Each joist should be spaced no more than a maximum of 400mm apart.	
We recommend as a rule of thumb purchasing 1x joist per square metre of decking.	

Composite joists from WPC Decking can be utilised for most domestic decking and wall cladding projects and we highly recommend they are used in conjunction with a hard concrete base. This is to ensure that the joist support substructure is sturdy and, above all, reliable to use for the rest of your project.



**PLEASE NOTE** - Images are used for illustration purposes only, actual item may vary slightly from the image supplied.

T: 01837 659 901 E: [info@cladco.co.uk](mailto:info@cladco.co.uk)

[WWW.CLADCODECKING.CO.UK](http://WWW.CLADCODECKING.CO.UK)

Beardown Road, Exeter Road Industrial Estate, Okehampton EX20 1UA