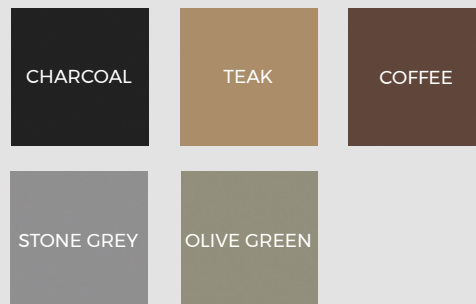


3M COMPOSITE FENCE POST SIGNATURE RANGE



Our Signature composite fence posts are available in 3m lengths and are designed to be installed with Cladco Signature composite fencing panels. posts are made from 100% recycled materials, with marked channels on four sides for easily slotting panels into for a secure fencing project.

COLOUR RANGE



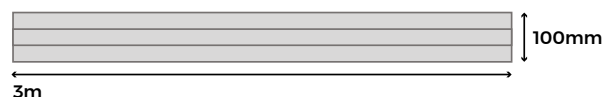
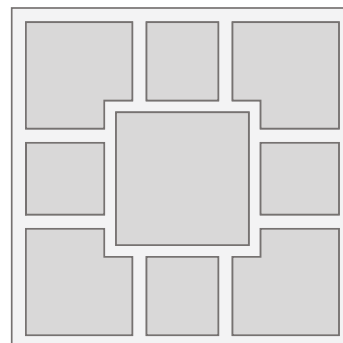
PANEL SPECIFICATIONS

SKU	(Charcoal) WPCFPB30 (Teak) WPCFPT30 (Coffee) WPCFPC30 (Stone Grey) WPCFPS30 (Olive Green) WPCFPO30
Length	3m
Height	100mm x 100mm
Weight	16.5kg

TEST CERTIFICATIONS






FSC® Certification

SA-COC-005542



Please Note: Images are for illustration purposes only. Actual products may vary slightly from those shown.



 <h3>MATERIALS</h3> <p>Composite wood-plastic mix comprising 60% hardwood fibres, 40% recycled plastics.</p>	 <h3>INSECT RESISTANCE</h3> <p>The recycled plastic content in composite fencing resists insects and pest attacks.</p>	 <h3>ACCESSORIES</h3> <p>Complete your Cladco Signature composite fencing with corresponding fencing panels and post caps.</p>	 <h3>LOW MAINTENANCE</h3> <p>Cladco Signature composite fencing posts do not need staining, varnishing or treating.</p>	 <h3>LONG LASTING</h3> <p>Cladco Signature composite fencing posts are a long lasting addition to your outdoor project.</p>
---	---	---	--	--

RECYCLED MATERIALS

Cladco Signature composite fencing is composed of 100% recycled materials consisting of 60% recycled hardwood fibres and 40% recycled plastic. As post-consumer plastic is utilised in composite fencing, it makes for an environmentally friendly option.

Additives of anti-uv agents, tints and bonding agents are included to bind together the recycled materials, this allows for a sturdy and long-lasting fence.

All Cladco composite products are available as FSC® certified for the same cost. If you require FSC® certified products, please ask for these when placing your order.

All Cladco composite products are available as

FSC® certified for the same cost. If you require FSC® certified products, please ask for these when placing your order.

AFTERCARE

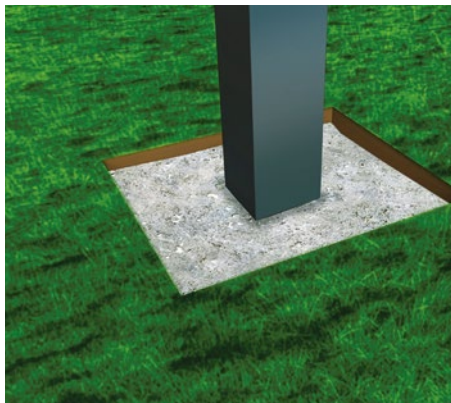
As a composite material, Cladco Signature composite fencing panels will naturally accumulate dirt when exposed to outdoor conditions. For everyday debris such as plants, leaves, berries, or animal droppings, simply brush your fencing with a brush and warm, soapy water.

In cases of more stubborn dirt or grime, pressure washing may be necessary to restore the fencing's appearance.

INSTALLATION ADVICE

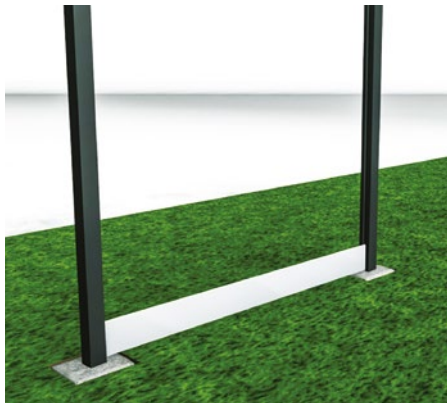
Prepare The Area

Remove any debris from the area and mark the fence post holes. These should be dug 25% of the height of the post. To efficiently support the fence panels, posts must be a maximum of 1.8m apart.



Method One

The slot between method requires fence panels to be cut into lengths of 1.8m. Panels simply slot into the grooves of the posts once channelled out. Posts can then be topped with fence post caps and fence rails to complete the project.



Method Two

Alternatively, secure each 3.6m panel to the front of the posts, with a composite post every 1.8m apart for support. The top and bottom of the fence panels should then be screwed to the front of the posts.



We recommend a **maximum total fence length of 15 metres** when using Cladco Signature composite fence posts.

Please note: The performance of Signature composite fence posts may be impacted when installed in areas exposed to strong winds or prolonged direct sunlight. For optimal performance and longevity, we recommend installing them in locations with natural shelter from wind and sun.

COLOUR STABILISATION

All Cladco Signature composite products contain UV stabilisers; however, due to their natural elements, all composite products will undergo an initial colour stabilisation process. This may result in some changes in colour during the first few months after installation as the product acclimatises to its environment.

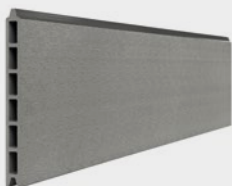
NATURAL WEATHERING

As Cladco Signature composite fencing panels contain natural wood elements, they will fade from weathering over time. This process is most noticeable within the first six months after installation.

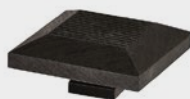
Please be aware that the appearance of composite panels will change depending on weather conditions and, when wet, panels will display a different tone compared to when they are dry.

For detailed information about installation, please read our Signature composite fencing installation guide.

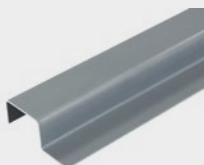
PRODUCT ACCESSORIES



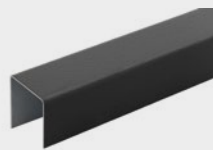
FENCING PANEL



FENCING POST CAPS



CONCRETE POST
SPACER



FENCING RAIL



STRAIGHT CUT
TIN SNIPS



www.cladco.co.uk
T: 01837 659901 E: info@cladco.co.uk

CLADCO
PROFILES