



3.6M WOODGRAIN COMPOSITE WALL CLADDING

Cladco Composite Woodgrain Wall Cladding features an authentic woodgrain surface to replicate the look of traditional timber. Our composite cladding can be installed either horizontally or vertically, and comes in a choice of eight colours. This durable and low maintenance material is perfect for revamping your building exterior.

COLOUR RANGE

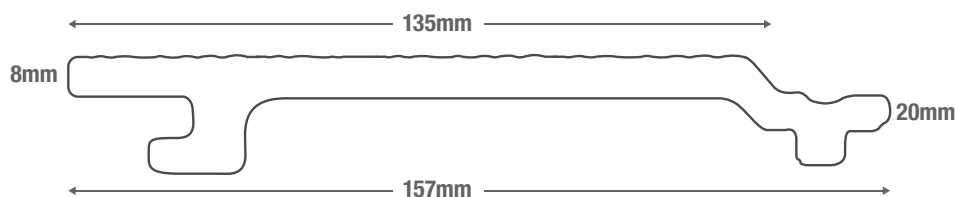


BOARD SPECIFICATIONS

Length	3.6m
Width	157mm
Thickness	20mm
Coverage	0.45m ²
Weight	6.95kg

TEST CERTIFICATIONS

FSC® Certification SA-COC-005542





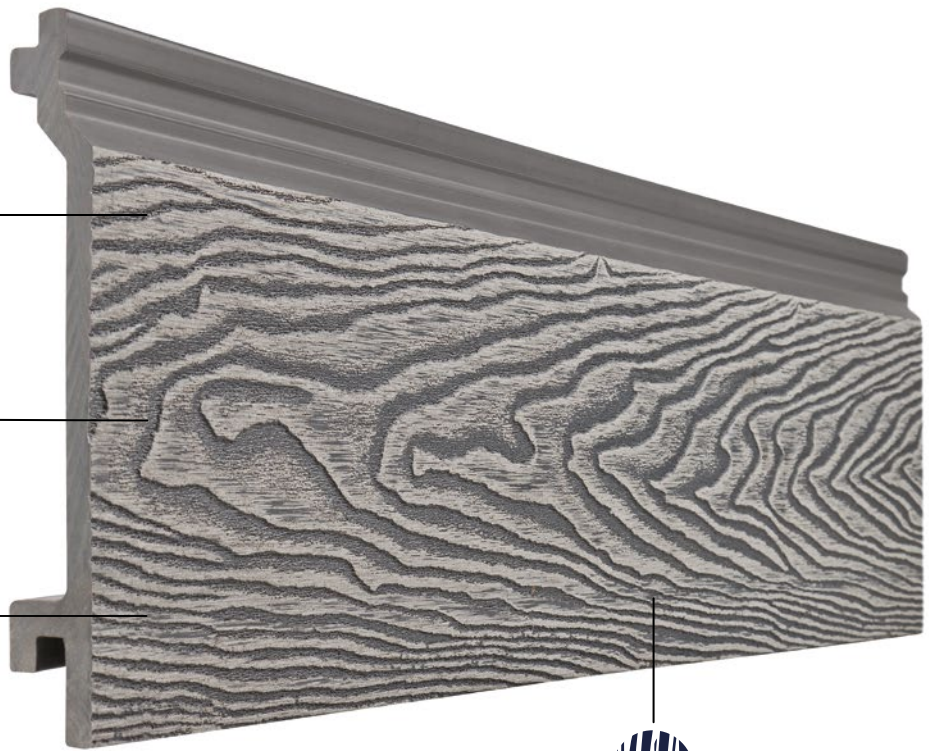
Installed With An Interlocking System



Manufactured From 100% Recycled Materials



Anti-UV Agent Resists Colour Fade



Woodgrain Surface



MATERIALS

Composite wood-plastic mix comprising 60% hardwood fibres, 40% recycled plastics.



SURFACES

Boards feature an authentic woodgrain effect surface for a sleek design.



ACCESSORIES

Complete your Cladco Composite Wall Cladding with our Composite Corner Trims.



LOW MAINTENANCE

Unlike timber, Cladco Composite Wall Cladding does not need to be sealed, stained or varnished.



GUARANTEE

Cladco Composite Wall Cladding is supplied with a 10-Year Guarantee.

RECYCLED MATERIALS

Cladco Composite Wall Cladding is manufactured using 100% recycled materials, reducing our impact on the environment. A mix of 60% recycled hardwood fibres and 40% recycled, post-consumer plastics provides each board with low-maintenance and long-lasting benefits.

Additional anti-UV agents, colour tints, bonding agents and additives are used to bind the materials to create a durable Composite Wall Cladding Board.

All Cladco composite products are available as FSC® certified for the same cost. If you require FSC® certified products, please ask for these when placing your order.

AFTERCARE

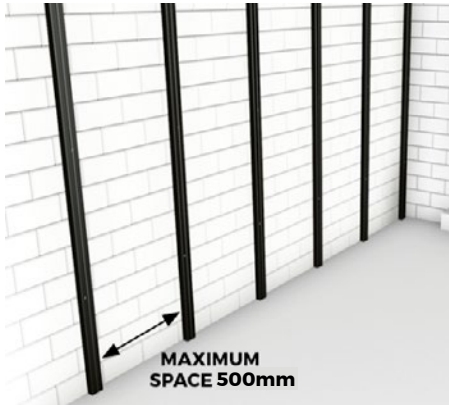
As a composite material, Cladco Composite Cladding Boards will naturally accumulate dirt when exposed to outdoor conditions. For everyday debris such as plants, leaves, berries, or animal droppings, simply brush your cladding with a broom and warm, soapy water.

In cases of more stubborn dirt or grime, pressure washing may be necessary to restore the cladding's appearance.

INSTALLATION ADVICE

Preparation

Battens should be spaced up to 500mm apart on exterior walls, with additional shorter battens installed every 200mm for gable ends. This ensures the composite boards are fully supported.



Pre-drill Battens

Pre-drill the battens and the surface below using a 6mm drill bit. Cladco Composite Battens are 30mm high and will need to be secured at least 50mm into the surface below.



Securing Boards

Secure the boards using a screw at least 20mm in length, ensuring that the board is fastened securely on each batten. Secure these fixings by hand, as is important not to over-tighten the screws.



COLOUR STABILISATION

All Cladco Composite products contain UV stabilisers; however, due to their natural elements, all composite products will undergo an initial colour stabilisation process. This may result in some changes in colour during the first few months after installation as the product acclimatises to its environment.

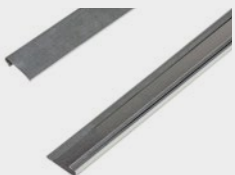
NATURAL WEATHERING

As Cladco Composite Cladding Boards contain natural wood elements, they will fade from weathering over time. This process is most noticeable within the first six months after installation.

Please be aware that the appearance of composite boards will change depending on weather conditions and, when wet, boards will display a different tone compared to when they are dry.

For detailed information about installation, please read our Composite Wall Cladding Installation Guide.

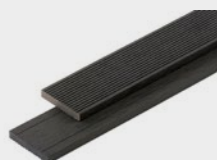
PRODUCT ACCESSORIES



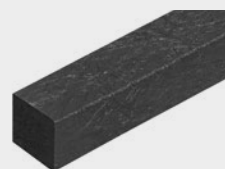
STARTER STRIPS



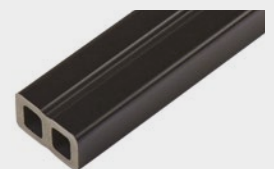
CORNER TRIMS



SKIRTING TRIMS



RECYCLED PLASTIC BATTENS



COMPOSITE BATTENS