

2.4M & 4M COMPOSITE DECKING BOARD SIGNATURE RANGE



Cladco woodgrain-effect reversible composite decking boards feature a five-hole honeycomb design, providing enhanced strength while remaining lightweight and easy to handle. Available in 2.4m and 4m lengths and a choice of eight contemporary colours, these boards offer a durable, low-maintenance, and stylish solution for a wide range of outdoor projects.

COLOUR RANGE

CHARCOAL	TEAK	LIGHT GREY	IVORY
OLIVE GREEN	COFFEE	REDWOOD	STONE GREY

BOARD SPECIFICATIONS

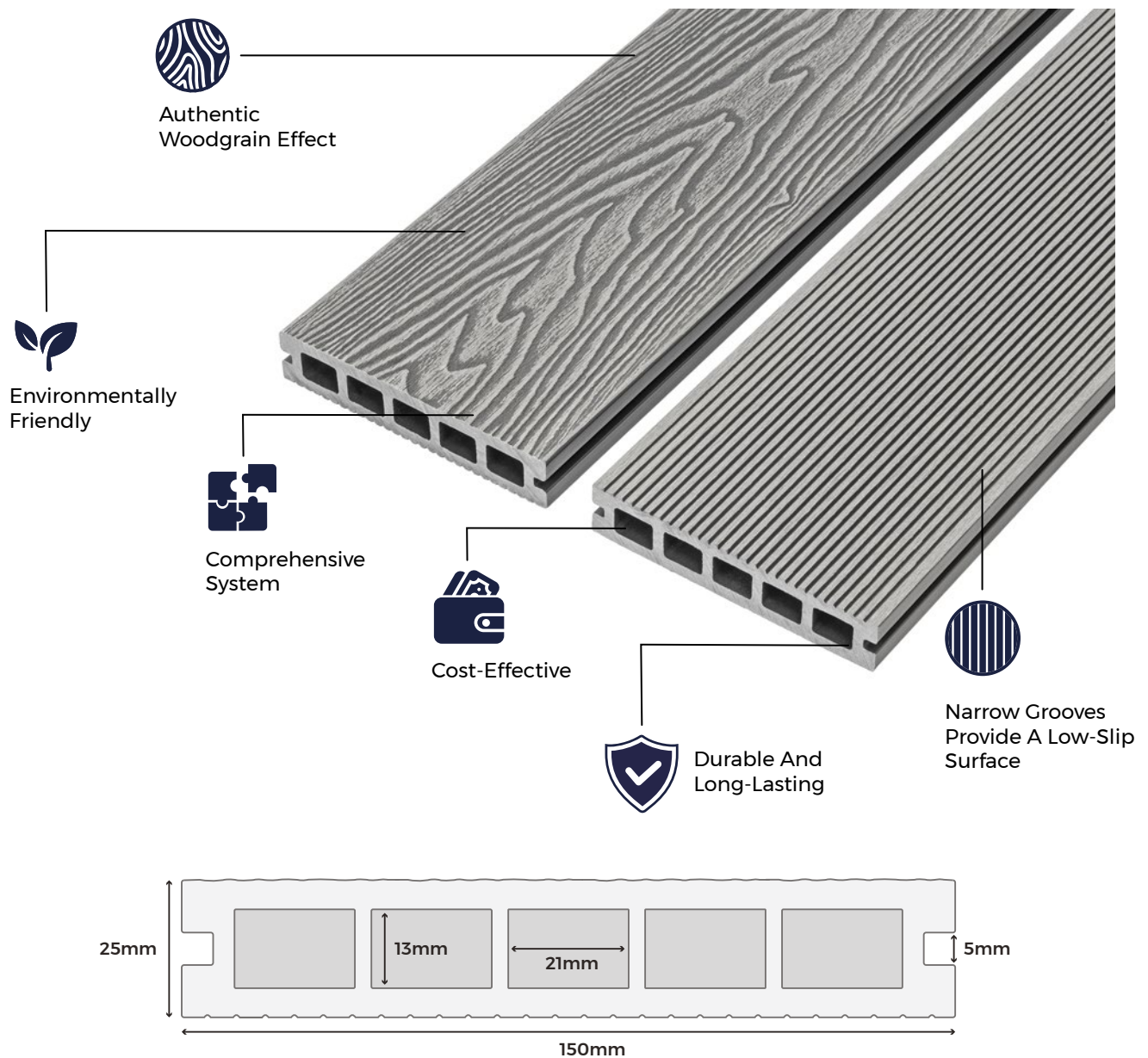
Length	2.4m & 4m
Width	150mm
Thickness	25mm
Coverage	0.36m ² (2.4m) 0.6m ² (4m)
Weight	6.72kg (2.4m) 11.2kg (4m)

TEST CERTIFICATIONS

FSC® Certification	SA-COC-005542
Fire Rating	CFL - s1 (EN 13501-1:2018)
Slip Resistance	DRY - Low-slip potential (Narrow Groove side) WET - Moderate slip potential (Narrow Groove side)

BOARD SKU

Colour	Length 2.4m	Length 4m
Charcoal	WPCHRB24	WPCHRB40
Teak	WPCHRT24	WPCHRT40
Coffee	WPCHRC24	WPCHRC40
Stone Grey	WPCHRS24	WPCHRS40
Redwood	WPCHRR24	WPCHRR40
Olive Green	WPCHRO24	WPCHRO40
Ivory	WPCHRI24	WPCHRI40
Light Grey	WPCHRL24	WPCHRL40





MATERIALS

Composite material comprising 60% recycled hardwood fibres and 40% recycled plastics.



SURFACES

Choose between a woodgrain-effect surface or low-slip narrow grooves to suit your outdoor space.



ACCESSORIES

Complete your Cladco decking area with matching composite bullnose boards and trims for a professional finish.



LOW MAINTENANCE

Unlike timber, Cladco composite decking boards require no sealing, staining, or varnishing.



WARRANTY

Cladco composite decking is supplied with a 15-year warranty for long-lasting peace of mind.

TEMPERATURE EXPANSION

Cladco composite decking boards naturally expand and contract with changes in temperature. To ensure a long-lasting installation, it is essential to follow our spacing guidelines, particularly at butt joints, where two boards meet end to end.

RECOMMENDED BUTT JOINT SPACING

- 7mm spacing at temperatures of 5°C and below
- 6mm spacing at temperatures between 5°C and 15°C
- 5mm spacing at temperatures of 15°C and above

Following these recommendations will help accommodate thermal movement and maintain the integrity of your decking installation.

RECYCLED MATERIALS

Cladco composite decking is manufactured using 100% recycled materials, helping to reduce environmental impact. Each board is made from a sustainable blend of 60% recycled hardwood fibres and 40% recycled, post-consumer plastics, providing long-lasting, low-maintenance benefits.

All Cladco composite products are available as FSC® certified at no additional cost. If you require FSC® certified products, please request this when placing your order.

AFTERCARE

Over time, Cladco composite decking boards may accumulate dirt and debris from outdoor exposure. To maintain the appearance of your decking:

Use a broom and warm, soapy water to remove everyday dirt, such as leaves, plants, berries, and animal droppings.

For stubborn grime, apply Cladco ultimate composite decking cleaner, a fast-acting foaming formula designed specifically for composite surfaces. If stains persist, pressure washing may be used to help restore the decking's original appearance. Regular cleaning will help preserve the finish and performance of your decking for years to come.



www.cladco.co.uk

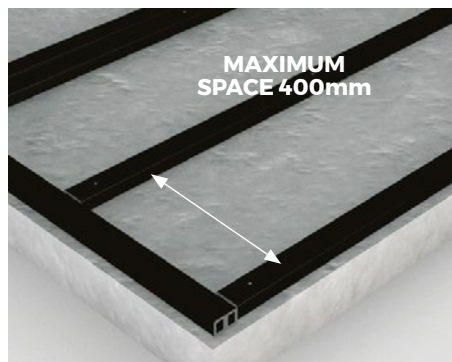
T: 01837 659901 E: info@cladco.co.uk

CLADCO
PROFILES

INSTALLATION ADVICE

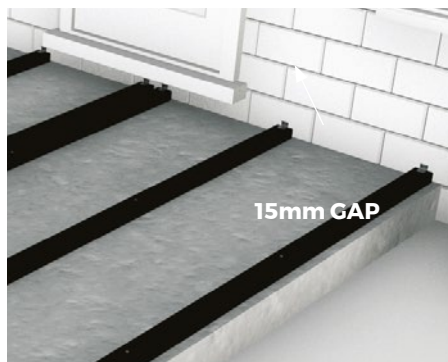
Joist Spacing

Cladco composite decking joists can be cut and installed using standard woodworking tools. For optimal support and performance, install joists onto a suitable substructure with a maximum spacing of 400mm, measured centre to centre.



Starter Clips

Starter clips must be fixed to the ends of the composite joists before laying the first decking board. Ensure a 15mm expansion gap is left between all walls and the joist substructure to allow for natural



Butt Joints

Double joists must be installed beneath all butt joints to ensure each decking board end is fully supported. Fixing clips must be used at each board end, and boards should never share a single fixing clip. This ensures secure installation and allows for natural expansion and contraction.



Adhering to these guidelines will help ensure proper installation and longevity of your composite decking. Failure to follow these guidelines will invalidate the product's warranty.

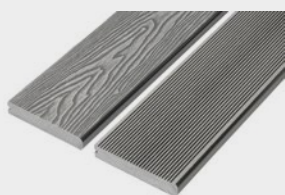
NATURAL WEATHERING

Cladco composite decking boards contain natural wood fibres and will undergo colour weathering over time. This is a normal process and is most noticeable during the first six months after installation as the boards stabilise.

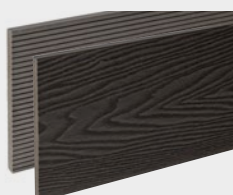
Please note that the appearance of composite boards may vary depending on weather conditions. Boards will often display a darker tone when wet compared to their dry appearance.

For full installation guidance, please refer to our composite decking installation guide available online.

PRODUCT ACCESSORIES



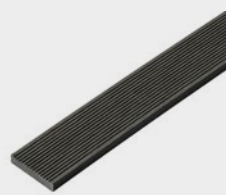
BULLNOSE BOARDS



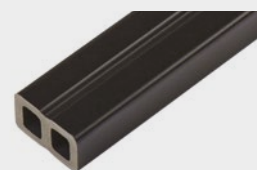
FASCIA BOARDS



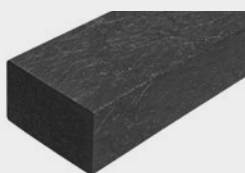
CORNER TRIMS



SKIRTING TRIMS



COMPOSITE JOISTS



**RECYCLED
PLASTIC JOISTS**



**STAINLESS STEEL
CLIPS AND SCREWS**

11 required per 4m Board



**T-CLIP FIXINGS
AND SCREWS**

11 required per 4m Board



**STAINLESS STEEL
STARTER CLIPS**



**HOLLOW DECKING
END CAPS**



www.cladco.co.uk

T: 01837 659901 **E:** info@cladco.co.uk

CLADCO
PROFILES