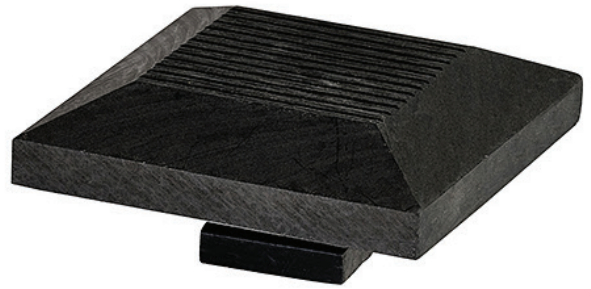


FENCE POST CAP

COMPOSITE FENCING



Cladco Composite Fence Post caps are used to top your Fence Posts. These Post Caps are made from 100% recycled materials. Four contemporary colours are available to choose from and match your Composite Fencing, making for an attractive timber alternative.

COLOUR RANGE



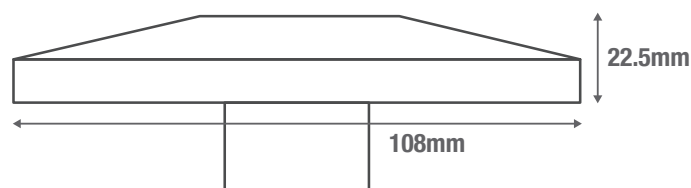
CAPS SPECIFICATIONS

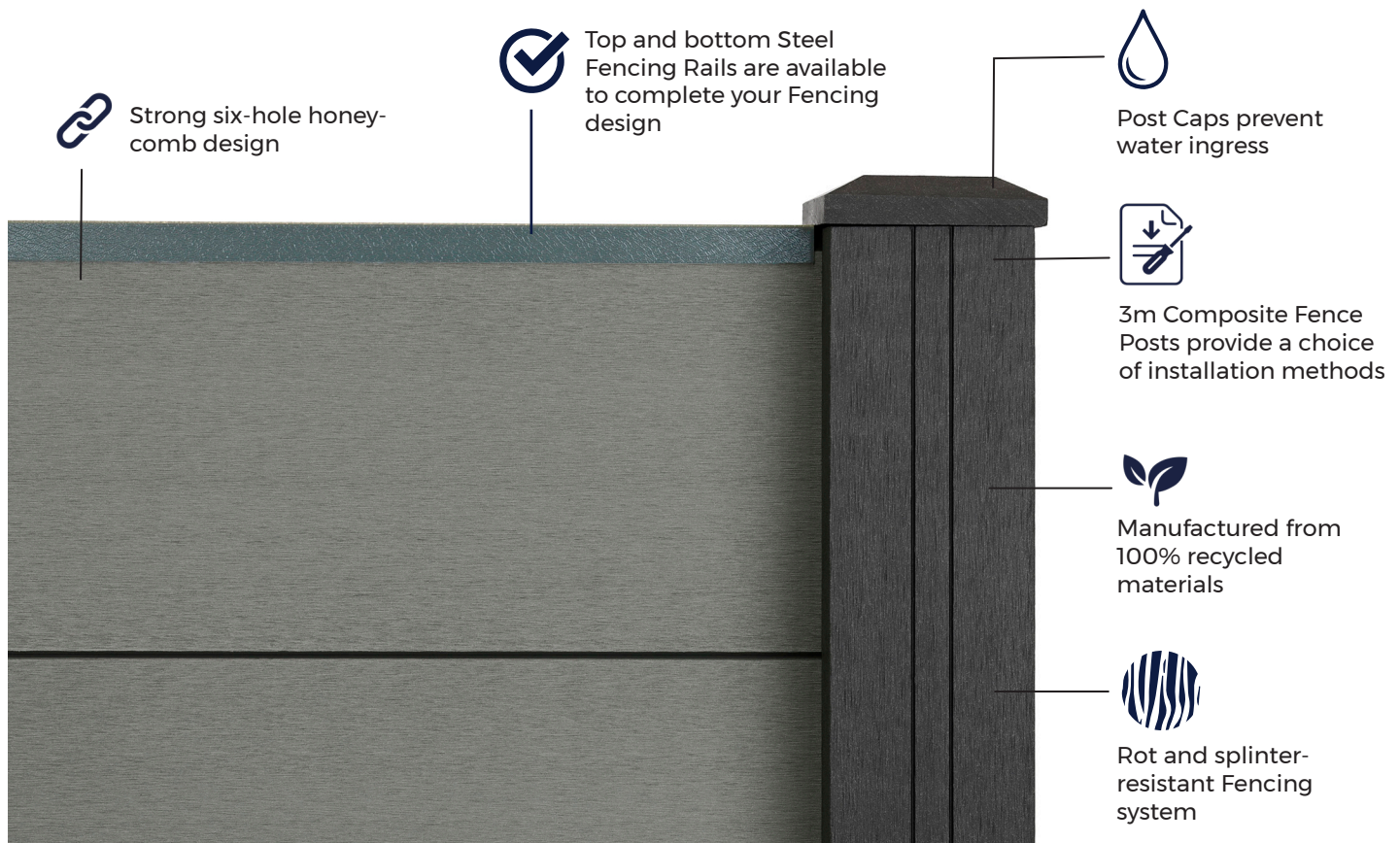
Length	108mm
Width	108mm
Height	22.5mm






TEST CERTIFICATIONS

FSC® Certification

SA-COC-005542





 <p>MATERIALS</p> <p>Composite wood-plastic mix comprising 60% hardwood fibres, 40% recycled plastics.</p>	 <p>INSECT RESISTANCE</p> <p>The recycled plastic content in Composite Fencing resists insects and pest damage.</p>	 <p>ACCESSORIES</p> <p>Composite Fencing Panels and Posts will be required to complete your project.</p>	 <p>LOW MAINTENANCE</p> <p>Cladco Composite Fencing Post Caps do not need staining, varnishing or treating.</p>	 <p>LONG LASTING</p> <p>Cladco Composite Post Caps are a long lasting addition to your outdoor project.</p>
--	---	--	---	---

RECYCLED MATERIALS

Cladco Composite Fencing is composed of 100% recycled materials consisting of 60% recycled hardwood fibres and 40% recycled plastic. As post-consumer plastic is utilised in Composite Fencing, it makes for an environmentally friendly option.

Additives of anti-UV agents, tints and bonding agents are included to bind together the recycled materials, this allows for a sturdy and long-lasting Fence.

All Cladco Composite products are available as FSC® certified for the same cost. If you require FSC® certified products, please ask for these when placing your order.

All Cladco Composite products are available as

FSC® certified for the same cost. If you require FSC® certified products, please ask for these when placing your order.

AFTERCARE

As a Composite material, Cladco Composite Fencing Posts will naturally accumulate dirt when exposed to outdoor conditions. For everyday debris such as plants, leaves, berries, or animal droppings, simply brush your Fencing with a brush and warm, soapy water.

In cases of more stubborn dirt or grime, pressure washing may be necessary to restore the Fencing's appearance.

INSTALLATION ADVICE

Once your Composite Fencing and Posts have been installed, simply place your Fence Post Cap on top of your Fence Posts.



COLOUR STABILISATION

All Cladco Composite products contain UV stabilisers; however, due to their natural elements, all Composite products will undergo an initial colour stabilisation process. This may result in some changes in colour during the first few months after installation as the product acclimatises to its environment.

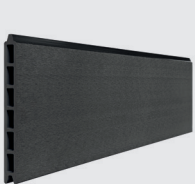
NATURAL WEATHERING

As Cladco Composite Fencing Post Caps contain natural wood elements, they will fade from weathering over time. This process is most noticeable within the first six months after installation.

Please be aware that the appearance of Composite Post Caps will change depending on weather conditions and, when wet, Post Caps will display a different tone compared to when they are dry.

For detailed information about installation, please read our Composite Fencing Installation Guide.

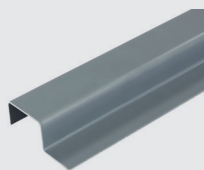
PRODUCT ACCESSORIES



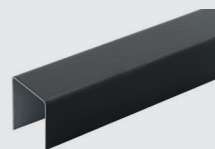
FENCING PANEL



FENCING POSTS



CONCRETE POST
SPACER



SKIRTING TRIMS



STRAIGHT CUT
TIN SNIPS