



Pictured Light Grey Fencing Panels, Charcoal Post and End Cap

CLADCO COMPOSITE FENCING

Installation Guide,
Aftercare and FAQ's

CLADCO
DECKING®



STORAGE AND HANDLING

Cladco Composite Fencing Panels should always be stored in a cool shaded spot, on a flat and level surface which supports the whole length of the Panel. It is recommended to store the Panels on a pallet to ensure they are not sat directly on wet or cold ground.

Wear protective gloves when handling the Panels and take care when lifting them. We recommend that a minimum of two physically capable persons carry the Panels. Always ensure persons assisting with installation or handling are physically capable.



COLOUR AND GRAIN

Cladco Composite Fence Panels are designed and manufactured to replicate the natural variants of a timber fence board.

It's recommended to purchase all Panels required for the project at the same time, as this will ensure colour consistency and ensure only one delivery cost. We recommend laying out all the Panels before installation to ensure a natural effect of grain and colour tone is balanced across the whole of your Fencing. As with all materials exposed to direct sunlight, some natural weathering may occur over time.

TOOLS



Protective Equipment

When handling or carrying Fencing Panels it is advised to wear long sleeves and gloves. When cutting the Panels, we suggest you wear a protective dust mask, ear defenders and safety glasses.



Tool Set

Standard everyday carpentry tools will be needed to complete the installation, including: tape measure, pencil, stanley knife and string.



Power Drill Or Driver

Standard power drills can be used when installing Composite Fencing.



Jigsaw Or Handsaw

Composite Fencing Panels and Posts can be cut using any standard wood cutting tools. We recommend using a fine toothed blade to get the cleanest finish to your cut edge.



Spirit Level and String

A spirit level is essential when installing your Posts to ensure a level support system.



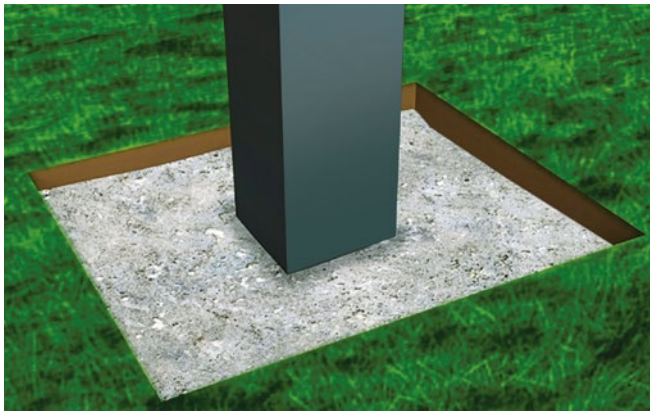
Shovel

A shovel will be required to dig the Post holes, along with a bucket, water and postcrete to form the concrete base for each Post.

INSTALLATION - METHOD ONE



1 Prepare your area by removing any stones, debris or hazardous material. Dig the Fence Post holes to 25% of the Post height. The Fence Posts must be a maximum of 1.8m apart to ensure they can support the Fence Panels. Run a piece of string from the first Post to last Post to make sure they are positioned square to each other.



2 Make sure every Fence Post is 100% level before using postcrete. Fence Posts must have at least 25% of their height concreted into place.



3 When adding the first Fence Panel, ensure it is 100% level before fixing to Posts. Screw the top and bottom of each Fence Panel to the Fence Posts behind.



EXTREME TEMPERATURES

Extreme temperature changes could cause the Panels to expand or contract. Ensure Panels have had sufficient time to acclimatise to the temperature before installing. Do not install in extreme temperatures.



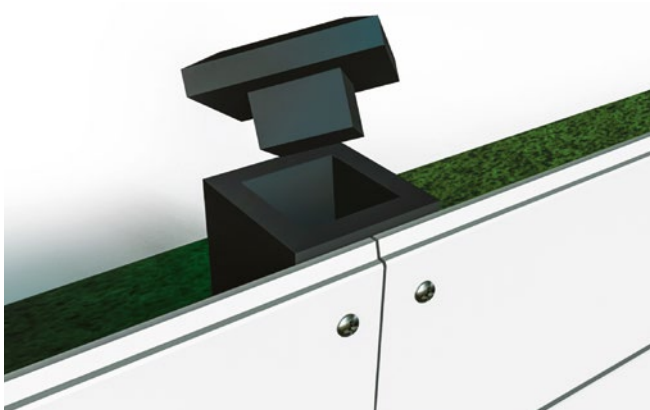
CUTTING

If Panels need to be cut to size, ensure the Panels are installed and secured immediately after cutting.

INSTALLATION - METHOD 1 CONTINUED



4 As you start to add more Panels ensure each Panel is 100% level before fixing. Each Fence Panel slots on top of the Panel previously fitted. (Example shows 3.6m Fence Panels with Fence Post in between).



5 Once the desired height has been reached (no more than 2.25m or 10 Panels) simply place the Composite Fence Cap on top of the Post. These are also available in all eight colours to match your Composite Fence. Fence Post Caps simply sit on top of the Post and do not need to be secured.



COLOUR SELECTION

Cladco Composite Fencing products are available eight attractive colours. Have you considered using different colours for the Posts and Panels to complement or contrast your garden design?



Pictured Light Grey Fencing Panels, Charcoal Posts and Light Grey End Caps

INSTALLATION - METHOD TWO



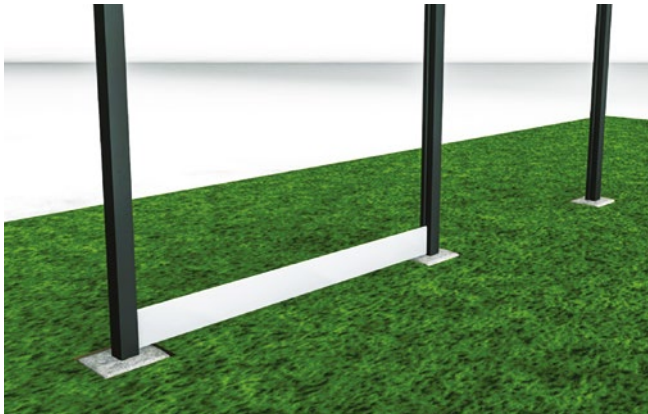
FENCING POSTS

Please note, due to variations within the manufacturing process of these Posts, we advise to **measure 20mm** and channel this out rather than using the lines on the Posts, if installing the Panels using the slot between method. If installing by securing to the front of the Post, this process does not need to be followed.



1 If using the slot between method, cut up to four channels per Post, measuring a 20mm gap to allow for a secure fitting of each Panel.

2 Make sure every Fence Post is 100% level before using postcrete. Fence Posts must have at least 25% of their height concreted into place.



3 When using the slot between method, the Fence Panels need to be cut into 1.8m lengths. The Posts must be no further than 1.8m apart. Then simply slide the Fence Panels into the grooves of the Posts, ensuring the Panels are slotted into place securely with minimal gaps at either end.



4 Finish your Fence Post with a Fence Post Cap. Now you can sit back, relax and admire your new Composite Fence and remember there is no need to paint or treat – simply enjoy.

AFTERCARE



MAINTAINING YOUR COMPOSITE FENCING

For standard everyday maintenance, such as clearing plants and leaves, brush your Fencing Panels using a stiff bristled brush.

To remove any dirt, grime or animal droppings, for example, Composite Fencing Panels can be washed using warm, soapy water and a sponge when needed. This will ensure your Fencing will look its best for years to come.

Cladco Composite Fencing products require very little maintenance once installed. Composite Fencing is also rot and weather resistant, and unlike traditional timber materials, Composite Fencing products do not need to be painted or stained.



Pictured Charcoal Fencing Panels, Posts and Caps

INSPIRATION

If you're looking for inspiration for your Composite Fencing project, check out the Gallery section on www.cladcodecking.co.uk/gallery/index for more.

FREQUENTLY ASKED QUESTIONS

Where can I install my Fencing?

Cladco Composite Fencing is very practical for any outdoor space, creating a low-maintenance boundary that can be installed into grass or concrete using postcrete to secure the Posts into place.

Can I use a pressure washer?

A pressure washer can be used to clean your Composite Fencing Panels. We recommend using a pressure washer with a psi of no greater than 2,000.

A fan tip should be used with a 40 to 60 degree spread, keeping the head 250-300mm away from the surface. Always test in an inconspicuous area first. Direct, prolonged contact could damage the surface of the Panels and should be avoided.

Do I need planning permission to put my Fence up?

You do not require planning permission to replace, maintain or repair an existing fence, so long as it doesn't increase its original height. If you are installing an entirely new Fence, please contact your local council for rules and regulations.

Can I use my own posts?

Cladco Composite Fence Panels should only be used with Cladco Composite Fence Posts. This will ensure that the Fence is secure and long lasting once installed and providing all the benefits of Composite Fencing, including low-maintenance and rot-resistance.

How much do Composite Fence products weigh?

A single 3.6m Composite Fencing Panel weighs approximately 11.52kg. Each Composite Fence Post weighs approximately 16.5kg.

What colours are available?

Unlike traditional timber fencing, Composite Fencing is available in eight colours to match your chosen design or to blend into the environment. Composite Fence Posts and Caps are also available in the same eight colours.



What is Composite Fencing made of?

Cladco Composite Fencing products are manufactured from 60% FSC-Certified hardwood fibres and 40% recycled plastic. This makes them an environmentally-friendly, rot resistant and durable Fencing material.

Is Composite Fencing fire rated?

As Cladco Composite Fencing Panels are part wood fibres, Composite Fencing products are not fire rated.



Head Office

Beardown Road
Exeter Road Industrial Estate
Okehampton
Devon
EX20 1UA

01837 659901

info@cladco.co.uk

www.cladcodecking.co.uk

CLADCO
DECKING®

Pictured Redwood Fencing Panels, Charcoal Posts and End Caps