

3.6M

FIBRE CEMENT LAP CLADDING



Cladco Fibre Cement Lap Cladding Boards are resilient, hassle-free and easy to maintain. With a choice of eight colours and an unpainted option to customise yourself, fibre cement lap boards offers the ultimate protection against harsh weather conditions. Each board measures 3.6m and is installed using a feather-board technique.

COLOUR RANGE

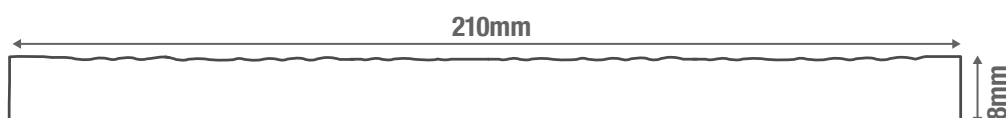


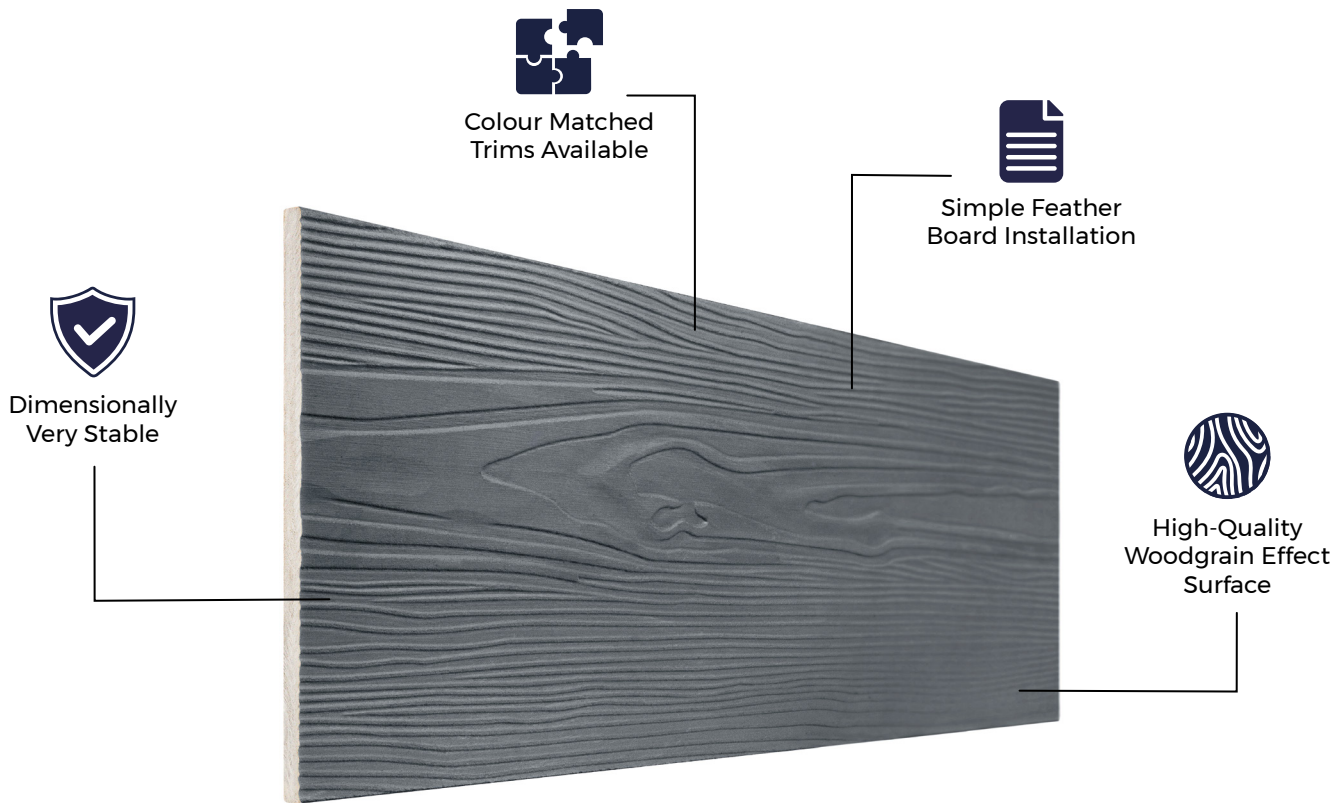
BOARD SPECIFICATIONS

Length	3.66m
Width	210mm
Thickness	8mm
Coverage	0.6m ²
Weight	11kg

TEST CERTIFICATIONS

FSC® Certification		B - s1, d0 (EN 13501-1: 2018)
SKU	Black Blue Light Grey Cream Slate Granite White Sage Green Unpainted	FCLWBL36 FCLWBG36 FCLWWG36 FCLWCW36 FCLWSG36 FCLWPE36 FCLWWH36 FCLWGG36 FCLWNP36





MATERIALS

Cellulose fibres and cement made with a blend of clay, iron and limestone.



SURFACES

Subtle embossed woodgrain effect design to transform any exterior.



ACCESSORIES

Complete your project with Cladco aluminium trims and colour-matched screws.



LOW MAINTENANCE

Fibre cement lap boards are not prone to damage by mould, pests or rot.



WARRANTY

Cladco Fibre Cement Lap Cladding Boards come with a 10-year warranty.

DIMENSIONALLY STABLE

The mix of materials used in the manufacturing of Cladco Fibre Cement Lap Wall Cladding produces a dimensionally-stable board. This results in little to no expansion of the boards when exposed to varying climates and temperatures.

EFFLORESCENCE

Efflorescence is a natural reaction in fibre cement products and can occur when moisture is present on the boards. To minimise this, we recommend storing boards indoors until they are ready to be installed. Avoid installing boards while they are wet, as this may increase the likelihood of efflorescence.

Ensure proper airflow behind the boards and along the perimeter of the cladding to allow for sufficient ventilation. Please note, this will eventually disappear as wind and rain dissolve the deposits.

AFTERCARE

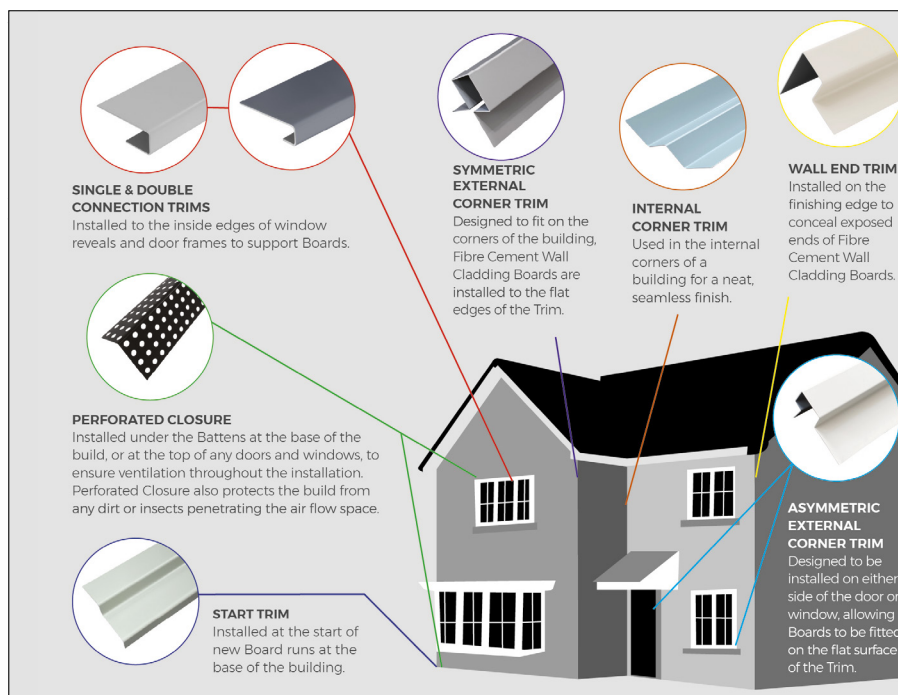
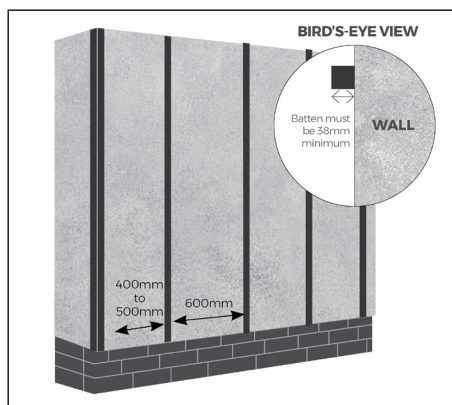
To keep your fibre cement boards in pristine condition, simply clean periodically using lukewarm, soapy water with a cloth or soft brush. Always use a gentle detergent, high-pressured cleaning systems are NOT recommended.

Cladco Fibre Cement Touch Up Paint can be used to hide marks or scratches on the surface of the boards that may accumulate over time, or during installation.

INSTALLATION ADVICE

The Measurements

Before installing any type of trim, whether that be symmetric, asymmetric or wall end trims, be sure to take all preliminary measurements detailed in our installation guide.



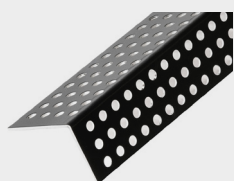
IMPORTANT NOTICE

When working with fibre cement materials, it is imperative that proper care is taken and necessary precautions are met. When fibre cement boards are cut, fine dust is released into the atmosphere.

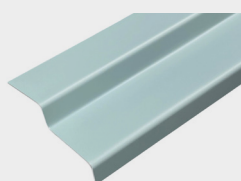
The mineral itself is harmless, however, is dangerous if inhaled and will constitute a health hazard. A level P3 respiratory protective mask should be worn when cutting the boards.

For detailed information about installation, please read our fibre cement lap installation guide.

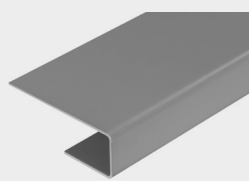
PRODUCT ACCESSORIES



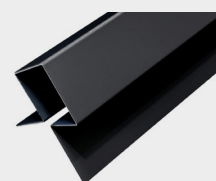
**PERFORATED
CLOSURE**



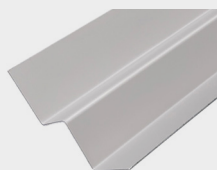
**STARTER
TRIM**



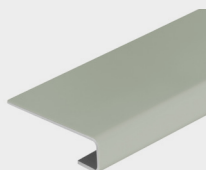
**DOUBLE CONNECTION
TRIM**



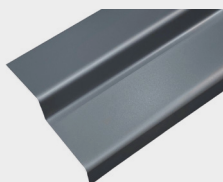
**SYMMETRIC EXTERNAL
CORNER TRIM**



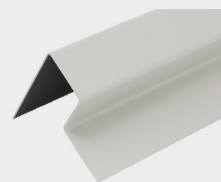
**INTERNAL CORNER
TRIM**



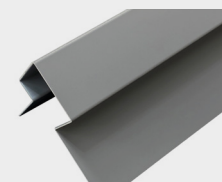
**SINGLE
CONNECTION TRIM**



**START
TRIM**



**WALL END
TRIM**



**ASYMMETRIC
EXTERNAL CORNER
TRIM**