

3.6M PROCLAD CAPPED COMPOSITE WALL CLADDING



Cladco ProClad Wall Cladding features a woodgrain effect finish to replicate the surface of traditional Timber Cladding. With superior protection against weather conditions and UV rays, the ProClad Board is a durable and long-lasting solution for transforming building exteriors.

COLOUR RANGE



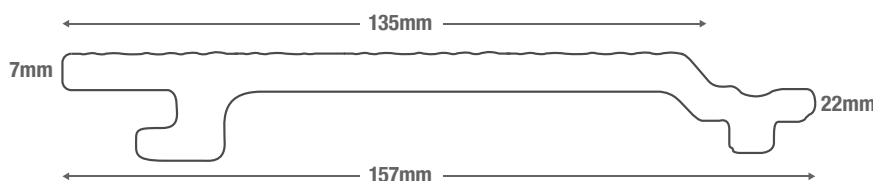
BOARD SPECIFICATIONS

Length	3.6m
Width	157mm
Thickness	22mm
Coverage	0.45m ²
Weight	6.15kg (approx)

TEST CERTIFICATIONS

FSC® Certification

SA-COC-005542





Woodgrain surface finish



Superior resistance to UV rays



Composite core manufactured from 100% recycled materials



Installed with an inter-locking system



Capped surface for increased resistance to weather conditions



MATERIALS

Composite core made with a mix of 60% hardwood fibres and 40% recycled plastic, with a polymer capping.



SURFACES

These capped Boards have an authentic woodgrain effect appearance.



ACCESSORIES

Complete your ProClad project with Capped Composite Corner Trims and Fascia Boards.



LOW MAINTENANCE

Unlike Timber or standard Composite Cladding, ProClad's Composite Capped Wall Cladding requires less maintenance.



WARRANTY

Cladco ProClad Wall Cladding is supplied with a 15-Year Warranty.

RECYCLED MATERIALS

Cladco ProClad Wall Cladding has a core made from 100% recycled materials. The Composite core is a mix of 60% recycled hardwood fibres and 40% recycled post-consumer plastics to help reduce our environmental impact.

Our ProClad range takes our Composite Cladding core and caps it with a polymer protective shell to increase the Board's resilience. The subsequent Cladding Board is more resistant to weather conditions, scratching, staining and fading due to UV rays.

All Cladco Composite products are available as FSC® Certified for the same cost. If you require FSC® Certified products, please ask for these when placing your order.

AFTERCARE

Cladco ProClad Wall Cladding Boards may naturally accumulate dirt over time due to outdoor conditions. For everyday debris such as plants, leaves, berries or animal droppings, simply brush your Cladding with a broom.

In cases of more stubborn dirt or grime, using warm soapy water may be necessary to restore the Cladding's appearance.

INSTALLATION ADVICE

Preparation

Battens should be spaced up to 500mm apart on exterior walls, with additional shorter Battens installed every 200mm for gable ends. This ensures the ProClad Boards are fully supported.



Pre-drill Battens

Pre-drill the Battens and the surface below using a 6mm drill bit. Cladco Composite Battens are 30mm high and will need to be secured at least 50mm into the surface below.



Securing Boards

Secure the Boards using a screw with at least 20mm in length, ensuring that the Board is fastened securely on each Batten. Secure these fixings by hand, as is important not to over-tighten the screws.



Adhering to these guidelines will help ensure proper installation and longevity of your ProClad Capped Composite Wall Cladding. Failure to follow these guidelines will invalidate the product's warranty.

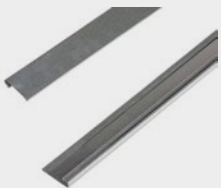
TEMPERATURE EXPANSION

The capped shell surface of the Composite core means that the Boards are less likely to be effected by temperature changes. It means that the ProClad Wall Cladding is more resistant to expansion or retraction due to heat and cold, making it a very stable option.

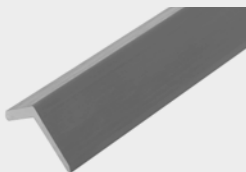
The polymer shell also provides protection against weather conditions and has improved insulating properties. This improved thermal performance helps regulate indoor temperatures and reduce heating and cooling costs.

For detailed information about installation, please read our ProClad Capped Composite Wall Cladding Installation Guide.

PRODUCT ACCESSORIES



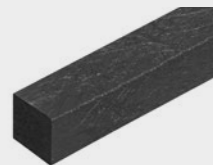
STARTER STRIPS



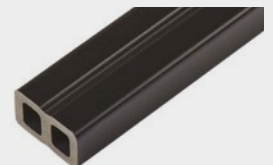
CAPPED COMPOSITE
CORNER TRIMS



CAPPED COMPOSITE
FASCIA BOARDS



RECYCLED PLASTIC
BATTENS



COMPOSITE BATTENS