

PRODECK T-CLIPS AND SCREWS



The ProDeck T-Clip Fixings and Screws are ideal for securing your ProDeck Capped Composite Decking Boards. Precision-made plastic T-Clips and Stainless Steel Screws offer resistance to water and corrosion to provide peace of mind about the longevity and security of your Capped Composite Decking.



MANUFACTURED FROM
STAINLESS STEEL FOR A
DURABLE RESULT



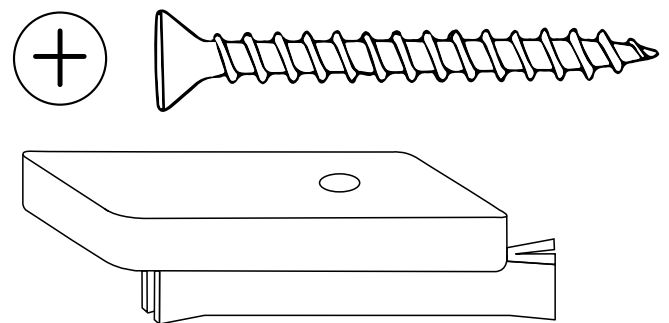
RESISTANT TO
CORROSION



EASY
INSTALLATION

T-CLIP AND SCREWS SPECIFICATIONS

Screw Length	45mm
Board Gap	7mm
Pack	100 (Per pack)
Material	Stainless steel (Screws) Plastic (T-Clips)





MATERIALS

The Screws are made from stainless steel to ensure strength and reliability.



SURFACES

Designed to fit into the grooved edges of the Capped Composite Decking Boards for a clean surface finish.



ACCESSORIES

Can be installed alongside Starter Clips to provide strong fixture of your Capped Composite Decking.



LOW MAINTENANCE

Once fixed, the T-clips and Screws are hidden and protected from weather elements which minimises maintenance.



LONG-LASTING

The materials of both the T-Clips and the Screws makes them durable an long-lasting for years to come.

Starter Clips

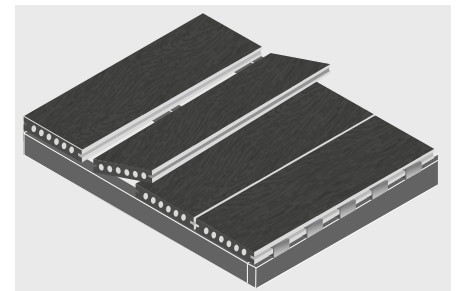
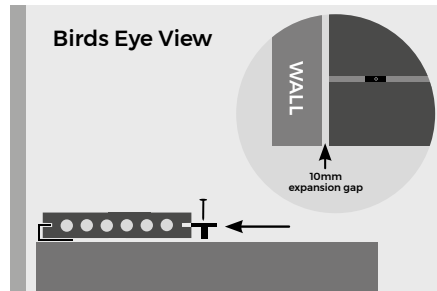
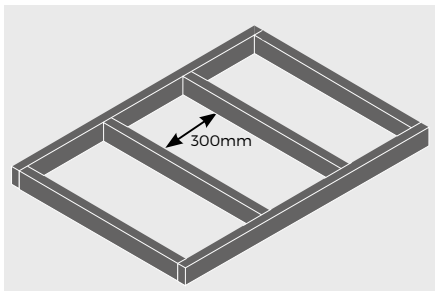
ProDeck Bullnose/Starter Clips need to be fixed to the end of the Joists before laying the first Board, leaving a gap of at least 10mm between any walls and the Starter Clip.

Expansion Gap

Do not allow ProDeck Capped Composite Boards to meet at the ends. T-Clips will leave a 7mm expansion gap between each Board to allow for expansion and contraction in temperature changes. It is not recommended that Boards are installed in temperatures below 5-degrees.

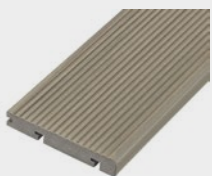
Last Boards

For the final two Boards, measure the width of both Boards together (including the 7mm expansion gap) to discover where the outer edge of the final Board will lie and mark out with a pencil on the below joists. Use this mark to fit the final Bullnose/Starter Clips and slot the last Board into place using these Clips.



Adhering to these guidelines will help ensure proper installation and longevity of your Capped Composite Decking. Failure to follow these guidelines will invalidate the product's warranty.

PRODUCT ACCESSORIES



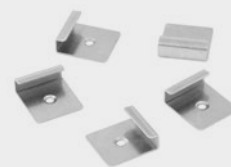
PRODECK BULLNOSE BOARDS



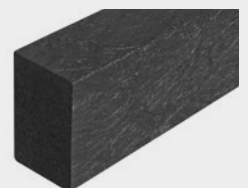
PRODECK FASCIA BOARDS



PRODECK DECKING BOARDS



PRODECK STARTER/BULLNOSE CLIPS



RECYCLED PLASTIC JOISTS