



PROFENCE ALUMINIUM POST CAP FENCING

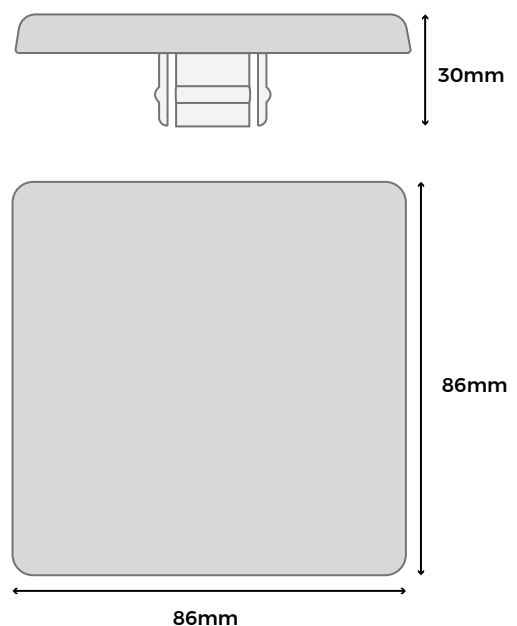
The ProFence Cap adds the perfect finishing touch to your fencing posts. Designed for durability, these strong, custom-fit aluminium covers attach easily to ProFence posts, delivering a polished and professional look.

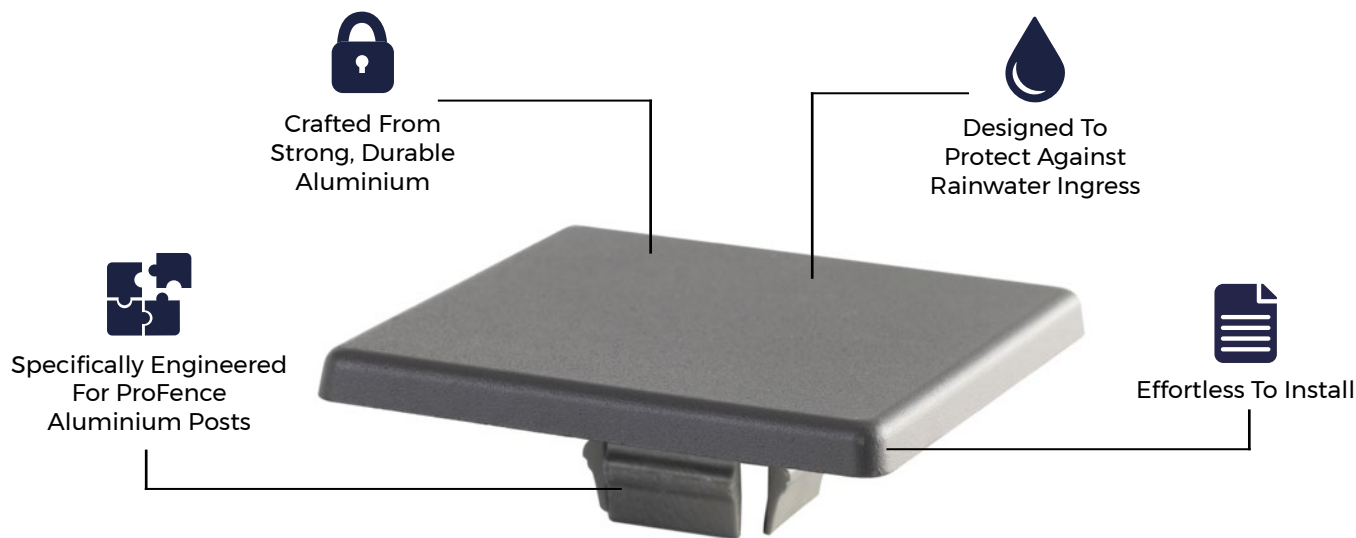
COLOUR RANGE

ANTHRACITE

POST CAP SPECIFICATIONS

SKU	WPCFPECAP
Depth	30mm
Dimensions	86mm x 86mm
Weight	0.1kg (approx.)





MATERIALS

Crafted from high-quality aluminium, these fence post caps are finished in Anthracite to perfectly match our ProFence Aluminium Posts.



DURABILITY

Designed for a secure fit, these fence post caps help prevent water ingress and corrosion, contributing to a longer-lasting fencing solution.



ACCESSORIES

Complete your Cladco ProFence project with matching panels, aluminium posts, top and bottom rails, and post caps for a seamless, professional finish.



LOW MAINTENANCE

These post caps help protect your fence from moisture, dirt, and weather-related damage, reducing the need for future maintenance.

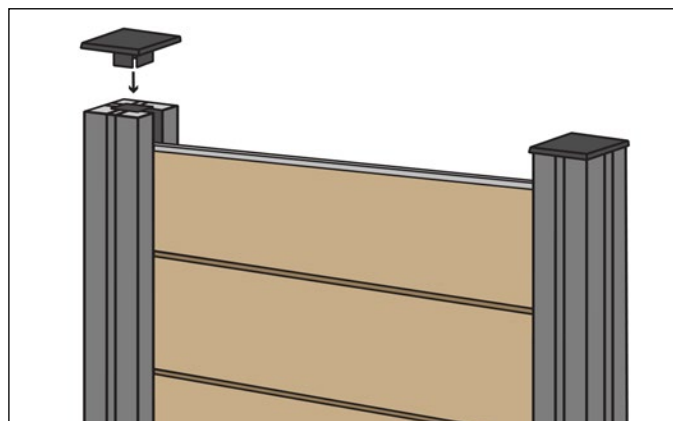


EASY TO INSTALL

ProFence post caps are easy to install, with a durable plastic stem that slots securely into the top of the aluminium post.

INSTALLATION ADVICE

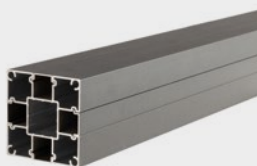
Post caps provide a simple yet effective finishing touch for your ProFence project. Designed to click into the top of the aluminium post, they complete the structure with ease—just push the cap down to slot it securely into place.



PRODUCT ACCESSORIES



**PROFENCE
PANELS**



**PROFENCE
ALUMINIUM POST**



**PROFENCE
POST FOOT**



**TOP &
BOTTOM RAILS**



www.cladco.co.uk

T: 01837 659901 **E:** info@cladco.co.uk

CLADCO
PROFILES