

PROFENCE FENCE POST FOOT FENCING



Designed specifically for ProFence aluminium fence posts, this post foot provides a stable, secure base for easy ground installation, meaning no concreting is required. Perfectly paired with our 1.9m posts, it allows for a strong, upright fit by simply slotting and fixing the post in place.



SPECIFICALLY ENGINEERED FOR CLADCO ALUMINIUM POSTS



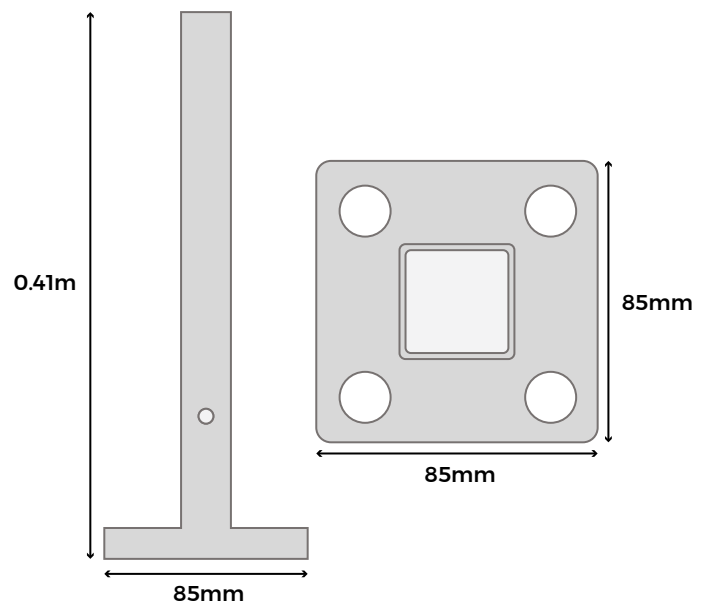
REINFORCES OVERALL DURABILITY OF INSTALLATION



PERFECT FOR USE ON HARD SURFACES

POST SPECIFICATIONS

SKU	WPCFPEFOOT
Height	0.41m
Foot Base Dimensions	85mm x 85mm
Weight	1.2kg (approx.)
Material	Steel





MATERIALS

Crafted from high-quality steel, the ProFence post foot delivers excellent durability, providing a stable and secure base for your installation.



DURABILITY

Designed specifically for compatibility with ProFence Aluminium Posts, this base ensures a reliable foundation to anchor each post securely.



ACCESSORIES

Complete your Cladco ProFence project with matching panels, aluminium posts, and post caps from the ProFence range.



LOW MAINTENANCE

Designed for a straightforward setup on hard surfaces, the ProFence post foot offers a solution that eliminates the need for digging or concreting.



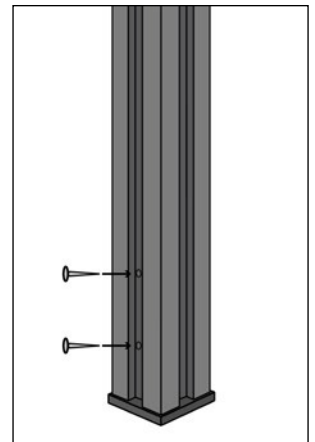
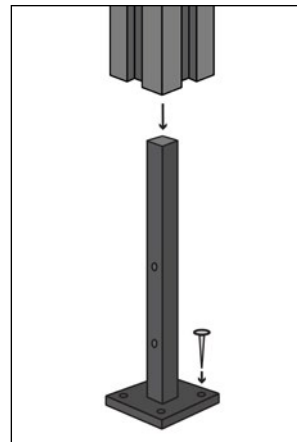
EASY TO INSTALL

Our Cladco post foot is easy to install by simply slotting and fixing the post in place.

INSTALLATION ADVICE

The post foot is designed for optimal compatibility with our 1.9m aluminium posts from the ProFence range. The post foot can be secured to the ground with the appropriate fixings and the aluminium post can be slotted on top of it. Remove one of the sliding channels to fix the foot and post to one another, then secure to the ground.

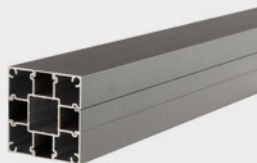
Important Note: Appropriate fixings for securing the post foot to the floor are not included and must be sourced separately.



PRODUCT ACCESSORIES



PROFENCE
PANELS



PROFENCE
ALUMINIUM POST



PROFENCE
POST CAP



TOP &
BOTTOM RAILS



www.cladco.co.uk

T: 01837 659901 E: info@cladco.co.uk

CLADCO
PROFILES